



SPARC KIPS BAY

Growing the Life Sciences Industry · Creating the Jobs of Tomorrow

Illustrative rendering

Science Park and Research Campus (SPARC) Kips Bay will be a first-of-its-kind job and education center in the heart of New York City.

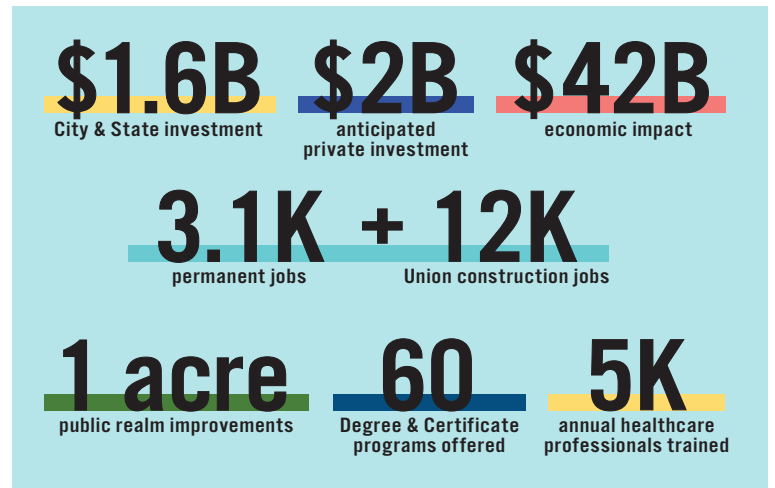
The project will transform Hunter College's Brookdale Campus on First Avenue and E 25th Street into nearly 2 million square feet of state-of-the-art academic, health care, and life sciences space, including:

- Classrooms and labs across three integrated City University of New York (CUNY) schools;
- An NYC Public Schools (NYCPS) health-and-science high school;
- Primary health care services and a training simulation center for NYC Health and Hospitals (H+H);
- A forensic pathology center and medical examiner facility (OCME);
- Life sciences research labs with space for companies of all sizes;
- Integrated community spaces; and more.

SPARC Kips Bay represents an **historic investment** of \$1.6 billion in City and State funding – alongside up to \$2 billion in private funding – that will create a pipeline from NYC's public education system to careers in the life sciences and public health sectors. It will **create opportunities** in the form of over \$40 billion in economic impact and over 3,000 permanent jobs in these growing and important fields.

This **world-class campus** will serve institutional needs while also delivering **critical neighborhood infrastructure**, including:

- New high-quality open space;
- A new ADA-accessible pedestrian bridge over the FDR Drive; and
- A tie-in to the Kips Bay Coastal Resiliency project.



Integrating Community Infrastructure

Generous outdoor space is central to making SPARC Kips Bay into a **vibrant hub** for research and education that is also an integrated part of the Kips Bay neighborhood. At three quarters of an acre, **SPARC Square** will be nearly the size of Zuccotti Park in Lower Manhattan or Bellevue Park just across the street. SPARC Kips Bay will deliver on community improvements within and beyond the block to enhance **public access, pedestrian safety, and open space.**

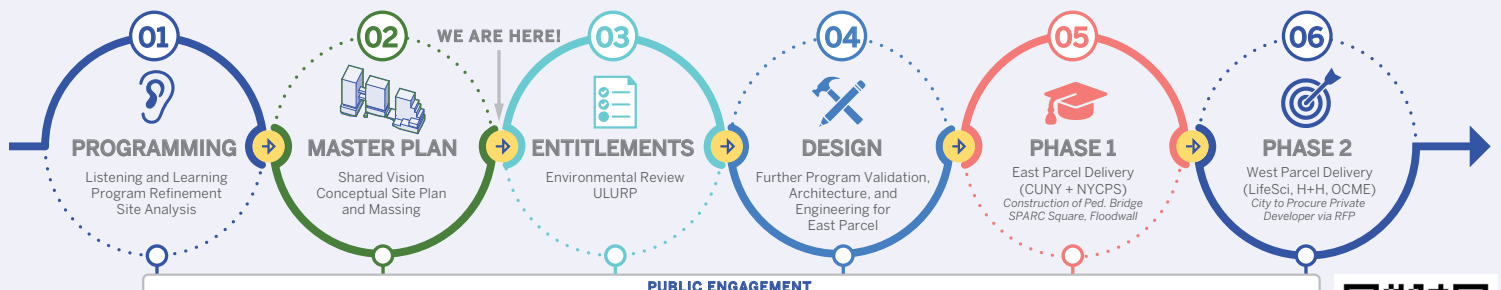


Building A Connected Life Sciences Ecosystem

As gateway to the Kips Bay Science District, SPARC Kips Bay will activate and **improve First Avenue** with new modern buildings and vibrant ground floor spaces enhancing the overall corridor for all users. The potential connections between **educational institutions, industry, and community** are abundant, including historic Bellevue Hospital to the north, NYU College of Nursing to the west, and the future Innovation East, just across the street at 455 First Avenue.

Educating and Training the Future Workforce

SPARC Kips Bay will uplift future generations of New Yorkers by creating **new connections** and opportunities in the health care, public health, and life sciences sectors. This new hub will bring together the **education, job training, and workforce development pathways** between CUNY, NYCPS, H+H, OCME, life sciences, and the community on a single campus – including opportunities to earn college credit, internships, fellowships, and integrated training programs.



Stay Involved!

The work of designing and building SPARC Kips Bay still remains – and will benefit from continued community input.

FOR MORE INFORMATION VISIT:
EDC.NYC/PROJECT/SPARC-KIPS-BAY
EMAIL: SPARC@EDC.NYC

