

# Manhattan Greenway Harlem River

## Sub-project Area 1

Located on the Harlem River between 125th Street and 132nd Street

Community Board 11 Presentation

September 1, 2022

Starr Whitehouse Landscape Architects and Planners



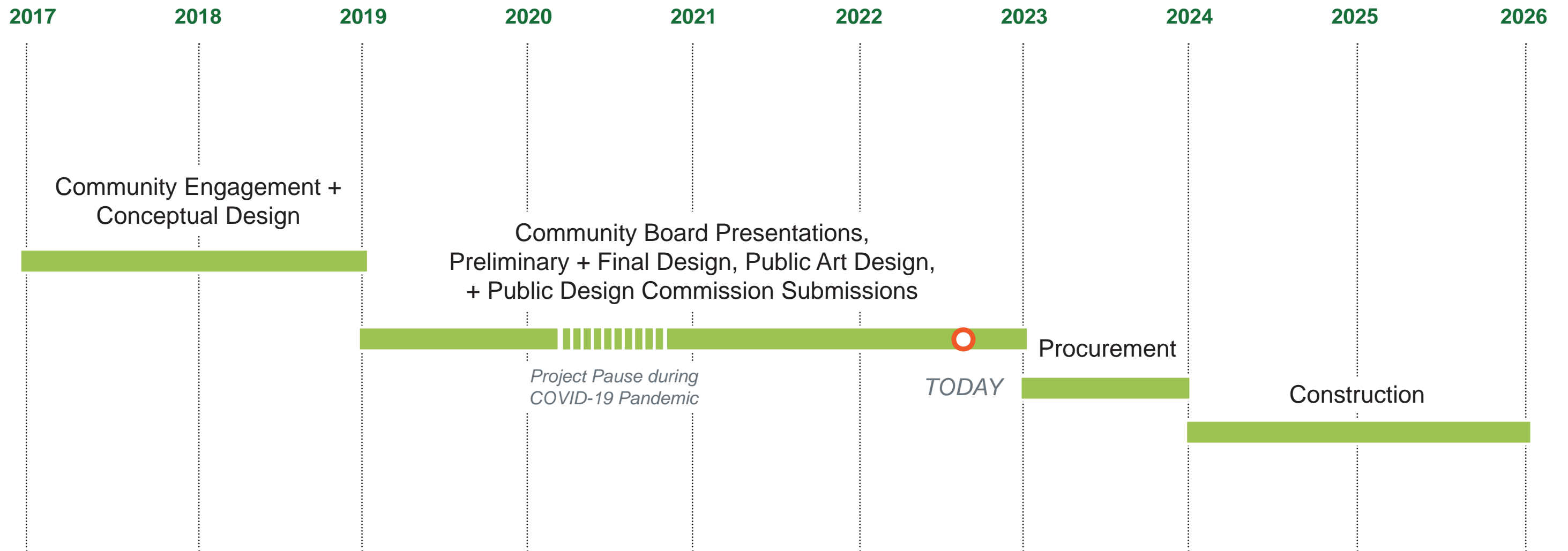
**LANGAN**



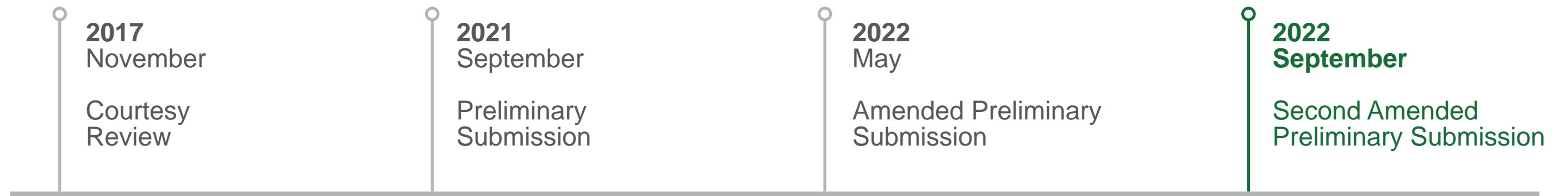
**STARR WHITEHOUSE**  
Landscape Architects  
and Planners PLLC



# Project Timeline

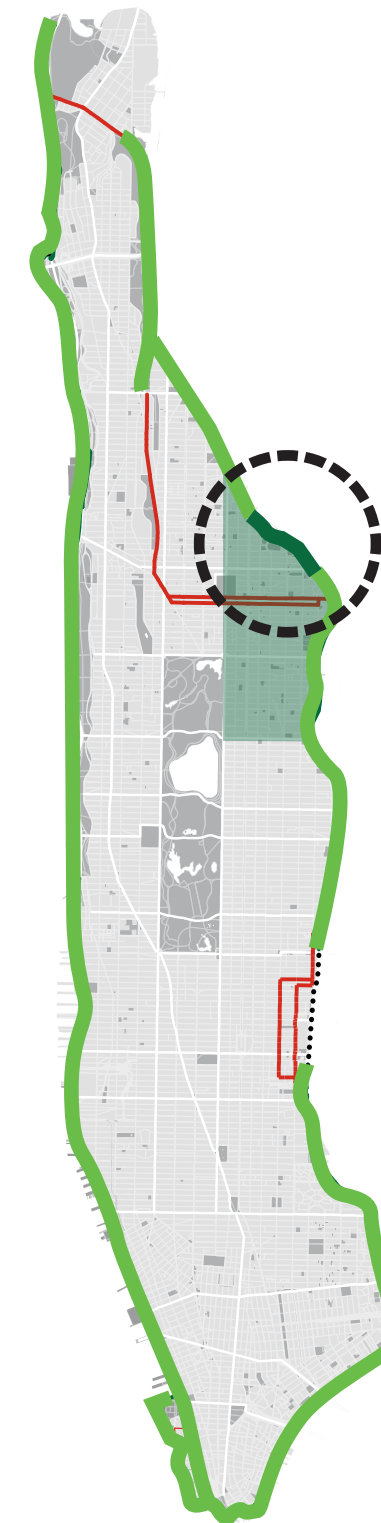


# Public Design Commission Presentation Timeline



## The Manhattan Waterfront Greenway

The Manhattan Greenway is a 32-mile long waterfront path for pedestrians, runners, cyclists, fishermen, and many others! The Manhattan Greenway Harlem River project addresses the missing link between E125th and E132nd Streets along the waterfront.



### Manhattan Greenway Harlem River E 125<sup>th</sup> to 132<sup>nd</sup>

- EAST HARLEM
- PROPOSED MANHATTAN GREENWAY HARLEM RIVER
- EXISTING GREENWAY
- EXISTING ON-STREET ROUTE
- MISSING GREENWAY LINK

## MGHR | Project Location

September 1, 2022







# MGHR | Project Location

September 1, 2022



STARR WHITEHOUSE  
Landscape Architects  
and Planners PLLC



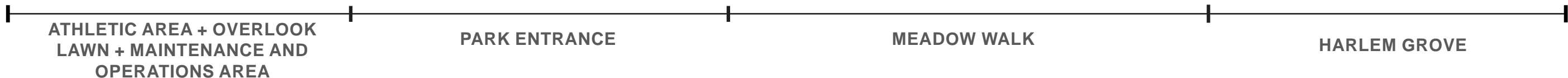
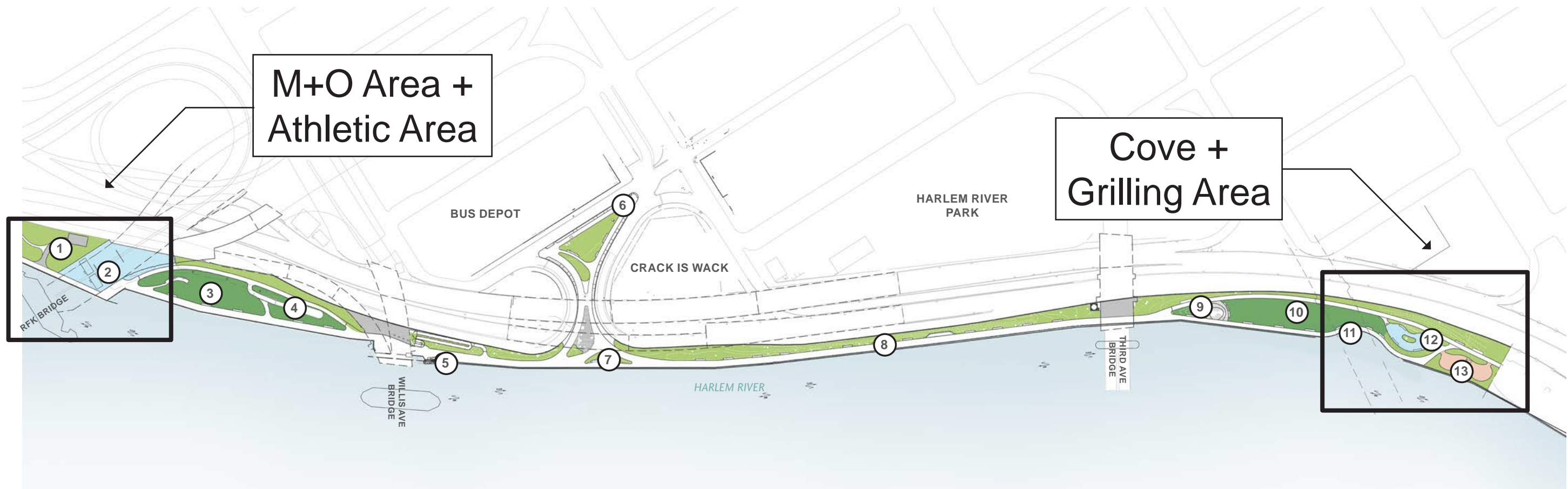


# MGHR | Sub-project Areas

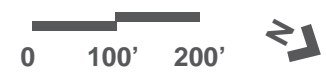
September 1, 2022







- |                                    |                              |
|------------------------------------|------------------------------|
| 1. MAINTENANCE AND OPERATIONS AREA | 8. MEADOW WALK / SHARED PATH |
| 2. ADULT FITNESS AREA              | 9. PUBLIC ARTWORK            |
| 3. SOUTH LAWN                      | 10. NORTH LAWN               |
| 4. TBTA BIKE RAMP LANDING          | 11. COVE                     |
| 5. OVERLOOK                        | 12. PLAYGROUND               |
| 6. 127TH ST PARK ENTRANCE          | 13. GRILLING AREA            |
| 7. STONE BLOCK SEATING AREA        |                              |



# MGHR | 2022 Design | Update Focus Areas

September 1, 2022



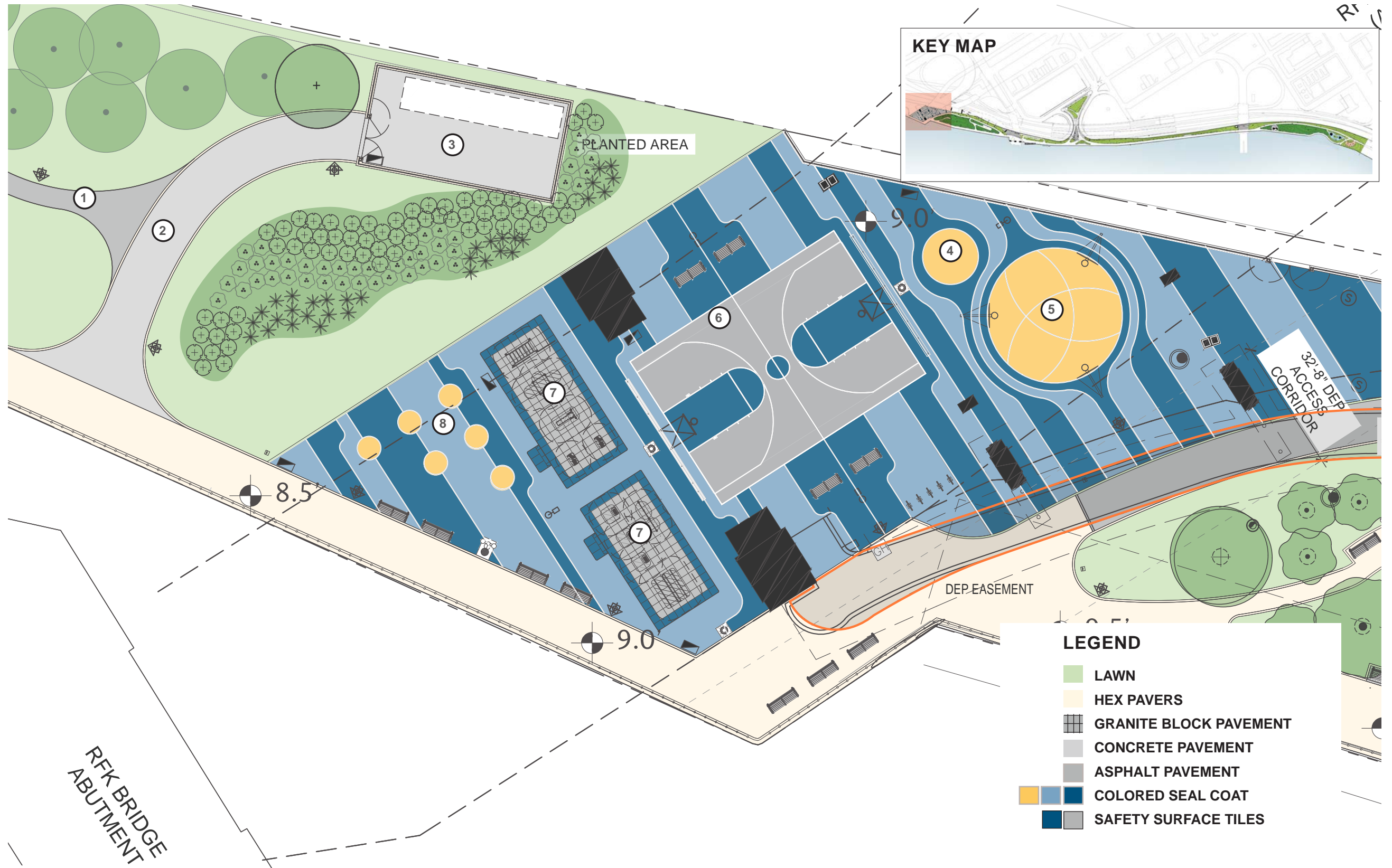
**STARR WHITEHOUSE**  
Landscape Architects  
and Planners PLLC

**MAINTENANCE AREA**

- 1. PEDESTRIAN PATH
- 2. ACCESS DRIVE
- 3. M+O AREA + STORAGE CONTAINER

**ATHLETIC AREA**

- 4. FLEXIBLE AREA
- 5. BASKETBALL SHOOTING AREA
- 6. BASKETBALL COURT
- 7. ADULT FITNESS
- 8. FLEXIBLE AREA



**LEGEND**

<span style="display: inline-block; width: 15px; height: 15px; background-color: #90EE90; border: 1px solid black;"></span> LAWN
<span style="display: inline-block; width: 15px; height: 15px; background-color: #FFFACD; border: 1px solid black;"></span> HEX PAVERS
<span style="display: inline-block; width: 15px; height: 15px; background: repeating-linear-gradient(45deg, transparent, transparent 2px, #808080 2px, #808080 4px); border: 1px solid black;"></span> GRANITE BLOCK PAVEMENT
<span style="display: inline-block; width: 15px; height: 15px; background-color: #A9A9A9; border: 1px solid black;"></span> CONCRETE PAVEMENT
<span style="display: inline-block; width: 15px; height: 15px; background-color: #696969; border: 1px solid black;"></span> ASPHALT PAVEMENT
<span style="display: inline-block; width: 15px; height: 15px; background-color: #FFD700; border: 1px solid black;"></span> <span style="display: inline-block; width: 15px; height: 15px; background-color: #4682B4; border: 1px solid black;"></span> COLORED SEAL COAT
<span style="display: inline-block; width: 15px; height: 15px; background-color: #000080; border: 1px solid black;"></span> <span style="display: inline-block; width: 15px; height: 15px; background-color: #A9A9A9; border: 1px solid black;"></span> SAFETY SURFACE TILES

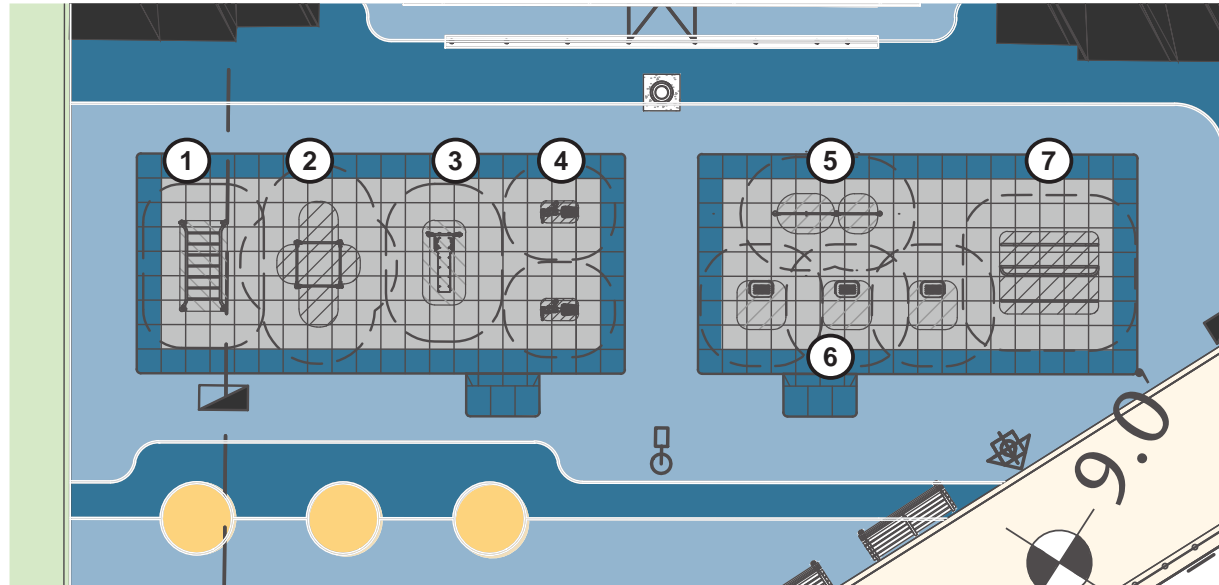
• Kompan products recommended for adult fitness area





# ADULT FITNESS EQUIPMENT

## Enlargement of Adult Fitness Area



- Kompan products recommended for adult fitness area
- All Equipment To Be Orange Scheme

## Fitness Equipment



1) OVERHEAD LADDER  
# FSW205



2) STRETCH STATION  
# FSW223



3) DECLINE BENCH  
# FSW204



4) ARM BIKE  
#FAZ51100-0901



5) CUSTOM ADA  
PULL-UP STATION  
# FSW20801-CUSTOM



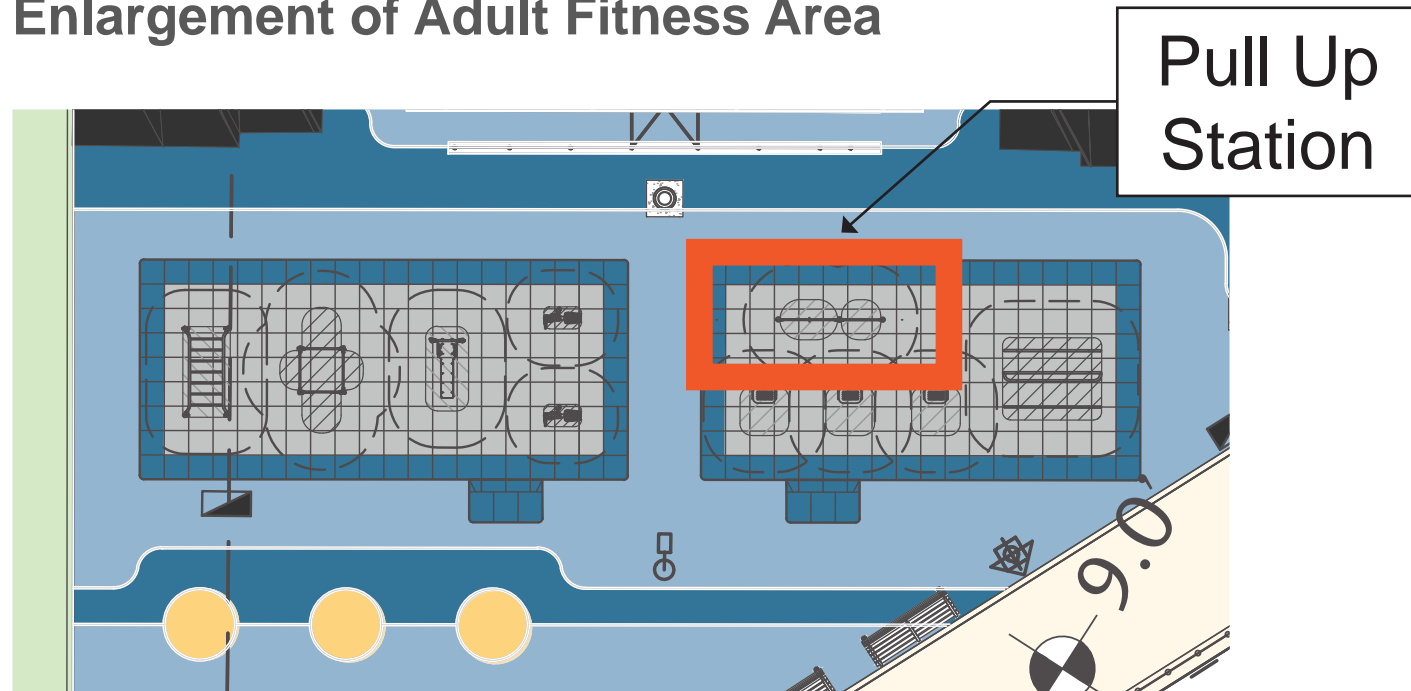
6) STEPS (16", 24", AND 32")  
#FAZ30-201-900, -301, AND -401



7) TRIPLE BARS  
# KPX132

# ADULT FITNESS EQUIPMENT

## Enlargement of Adult Fitness Area



- Kompan products recommended for adult fitness area
- All Equipment To Be Orange Scheme

## Presented in May 2022



PULL-UP STATION  
#FSW208

## UPDATED September 2022



CUSTOM ADA PULL- UP STATION  
#FSW20801-CUSTOM  
ADA ACCESSIBLE BAR AT 5' 6"





- LEGEND**
- PLANTED AREAS
  - HEX PAVERS
  - ASPHALT PAVEMENT
  - COLORED CONCRETE
  - SAFETY SURFACE TILES
  - HATCH = BIKE ROUTE INDICATED W. COLOR HEX PAVERS



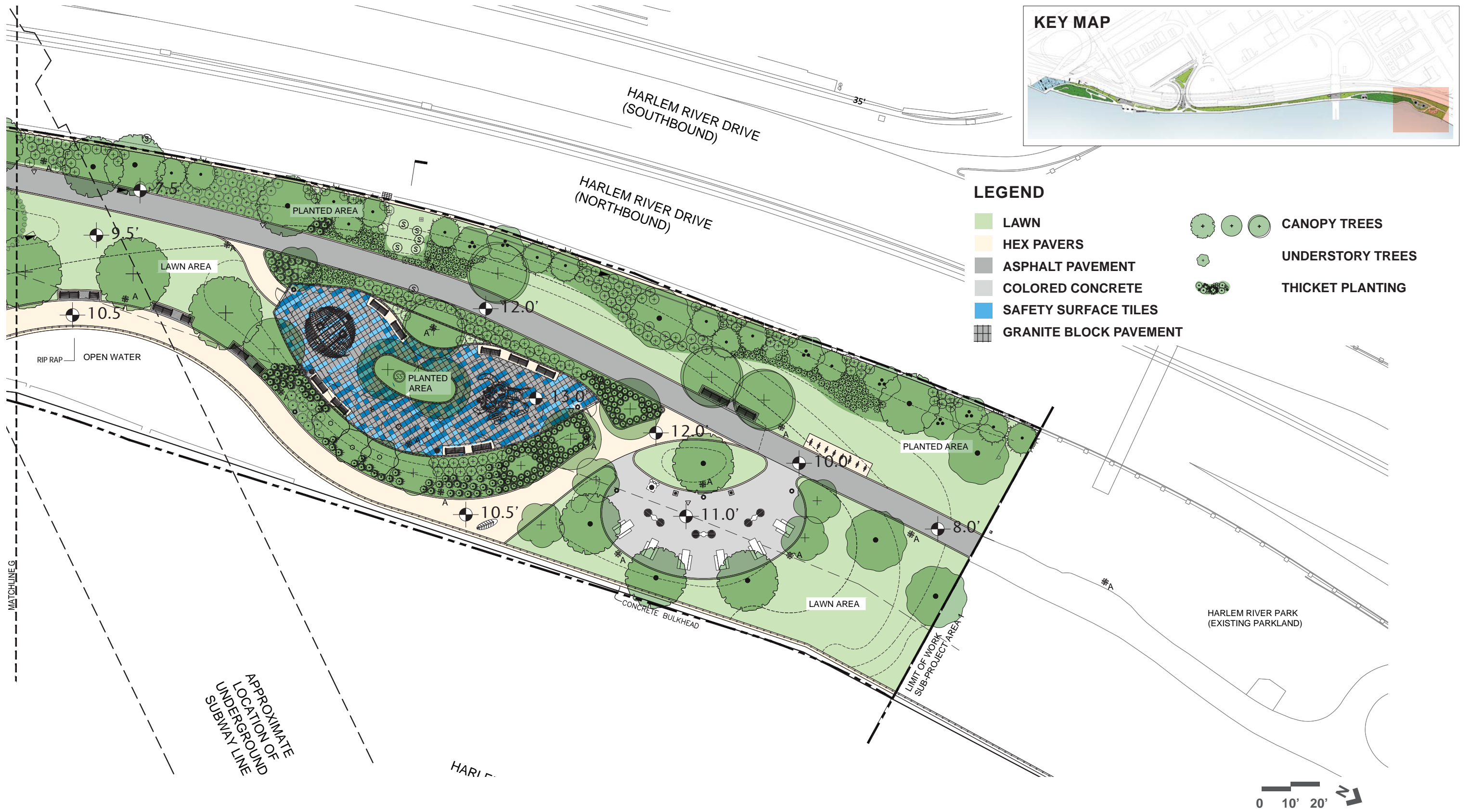
**MGHR | Playground and BBQ Area | June 2021**

September 1, 2022





**STARR WHITEHOUSE**  
 Landscape Architects and Planners PLLC



**MGHR | Playground and BBQ Area | April 2022**

September 1, 2022



**STARR WHITEHOUSE**  
Landscape Architects  
and Planners PLLC





# MGHR | Playground and BBQ Area | Updated

September 1, 2022



**LANGAN**



**STARR WHITEHOUSE**  
Landscape Architects  
and Planners PLLC





**BBQ GRILL**  
Most Dependable Fountains



**BBQ AREA**  
ADA picnic tables



**BOTTLE FILLER**  
Most Dependable Fountains



**HOT COAL BIN**  
NYC Parks Typ.

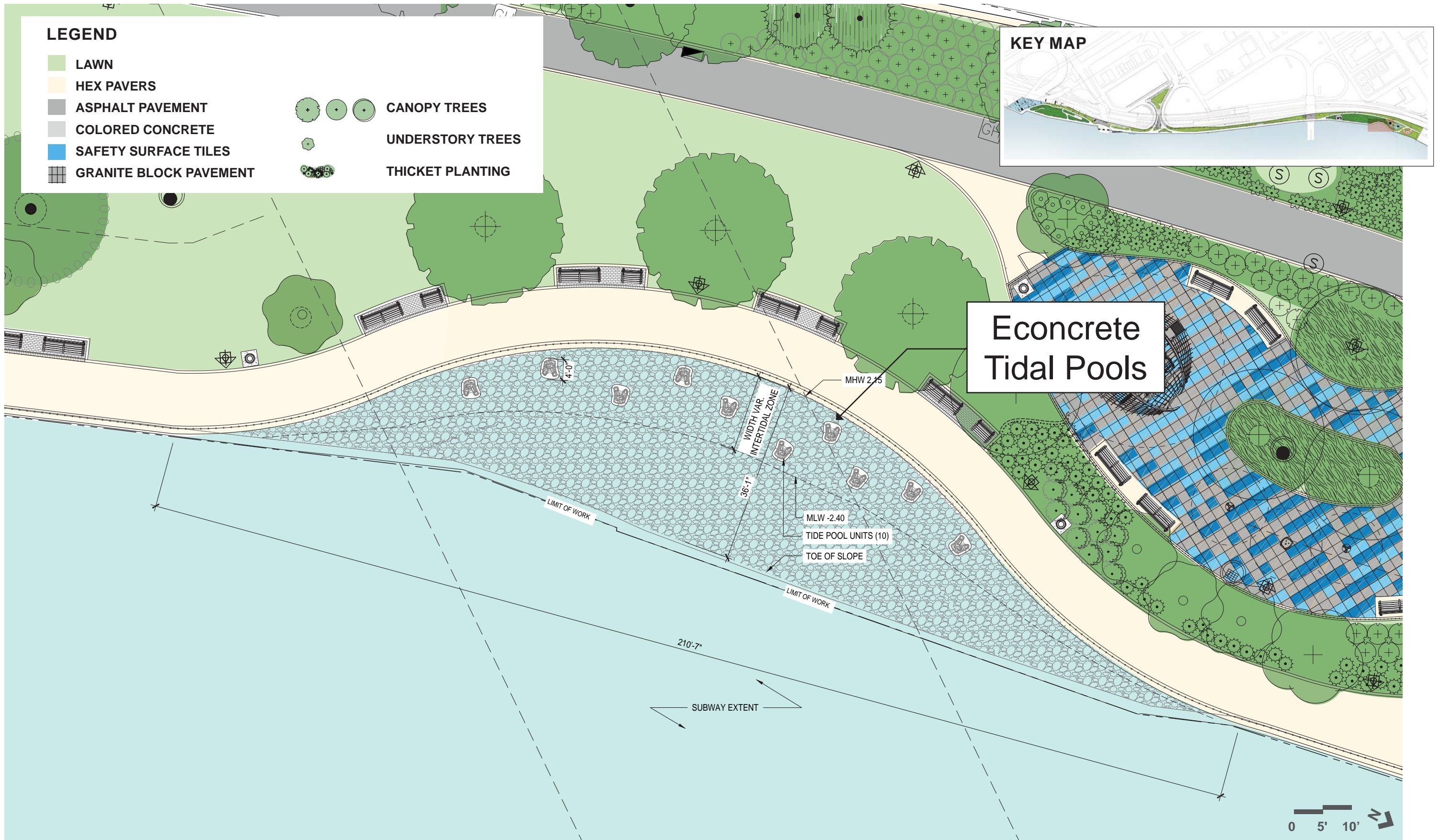


**TRASH RECEPTACLE**  
NYC Parks Typ.

# MGHR | Grilling Area Furnishings

September 1, 2022





**MGHR | Cove | Econcrete Tide Pools**

September 1, 2022



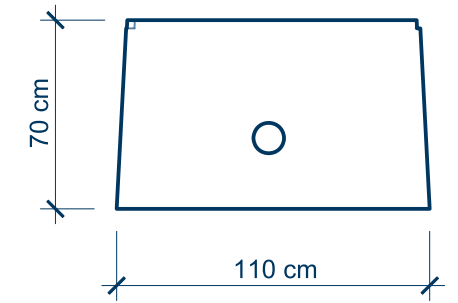
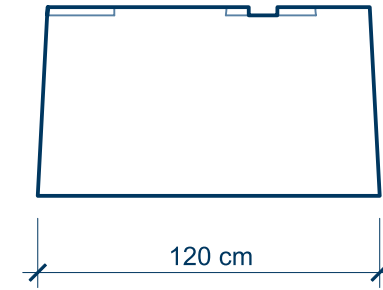
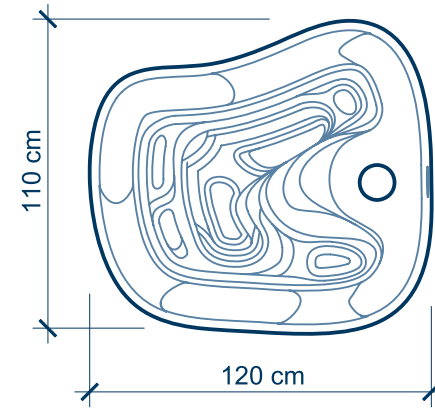
**STARR WHITEHOUSE**  
Landscape Architects  
and Planners PLLC



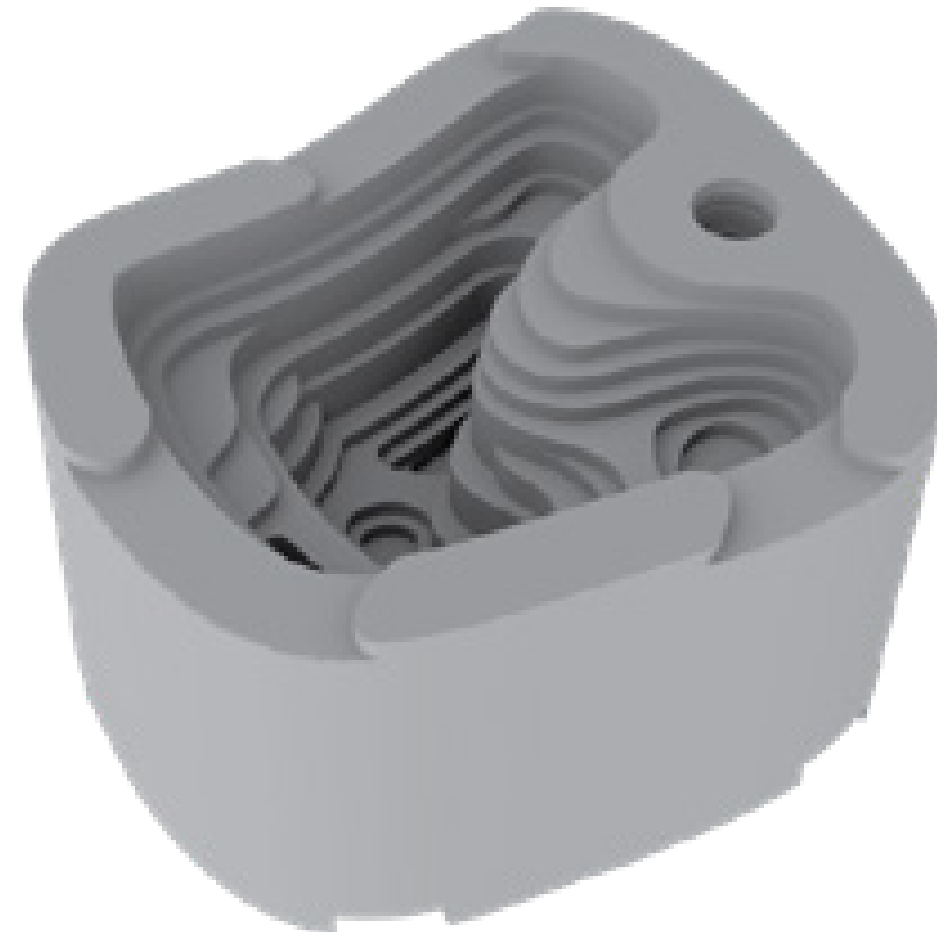


TIDAL POOLS AT BROOKLYN BRIDGE PARK

TIDAL POOL DIMENSIONS



TIDAL POOLS RETAINING WATER AT LOW TIDE



MGHR | Cove Econcrete Tidal Pools

September 1, 2022







**MGHR | Aerial View**

September 1, 2022



**LANGAN**



**STARR WHITEHOUSE**  
Landscape Architects  
and Planners PLLC



# Manhattan Greenway Harlem River

## Sub-project Area 1

Located on the Harlem River between 125th Street and 132nd Street

Community Board 11 Presentation

September 1, 2022

Starr Whitehouse Landscape Architects and Planners



**LANGAN**



**STARR WHITEHOUSE**  
Landscape Architects  
and Planners PLLC