

Community Workshop #2

July 11th, 2023

FOR MORE INFO:



107th STREET PIER and BOBBY WAGNER WALK



MARVEL

AGENDA

- Welcome
- Project Recap
- Public Art Update
- Community Engagement Summary
- Proposed Concept Design
- Breakout Session Discussion
- Next Steps

PROJECT TEAM

New York City Economic Development Corporation (EDC)
Implementing Agency

NYC Parks
Owner

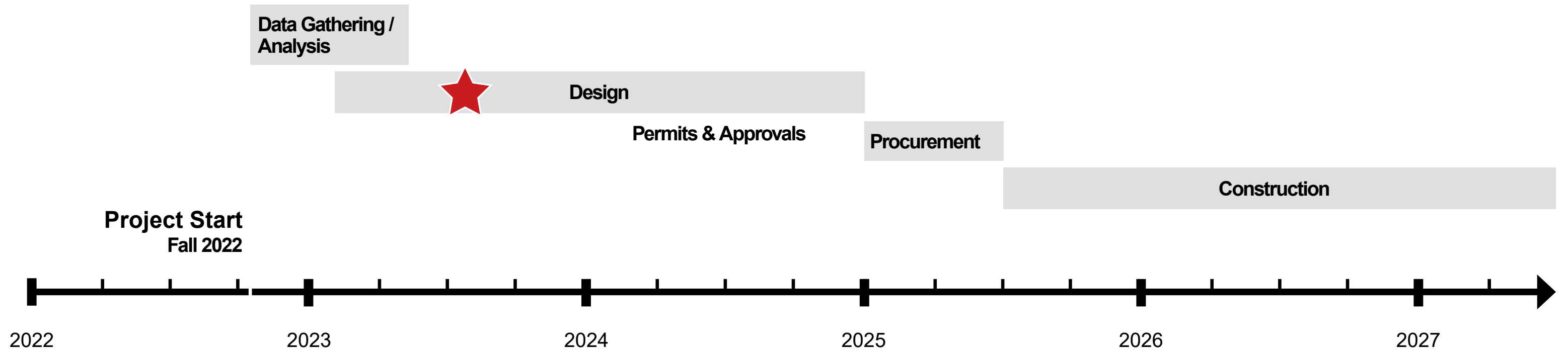
Stantec Consulting Services Inc.
Lead Designer, Landscape Architecture and Engineering

Marvel Architects, Landscape Architects, Urban Designers, PLLC (Marvel)
Architect, Urban Designer and Community Engagement Lead

Melissa Johnson Associates
Community Engagement

PROJECT RECAP

Project Timeline



Project Goals



- Esplanade repair /rehabilitation from East 94th-107th and 117th-124th and reconstruct 107th Street Pier
 - Bring site to a state of good repair
 - Restore public access to closed areas
 - Elevate for sea level rise
 - Enliven the waterfront
 - Provide a high-quality design open space
 - Bring community-supported uses to the pier
 - Incorporate public art

Project



Esplanade

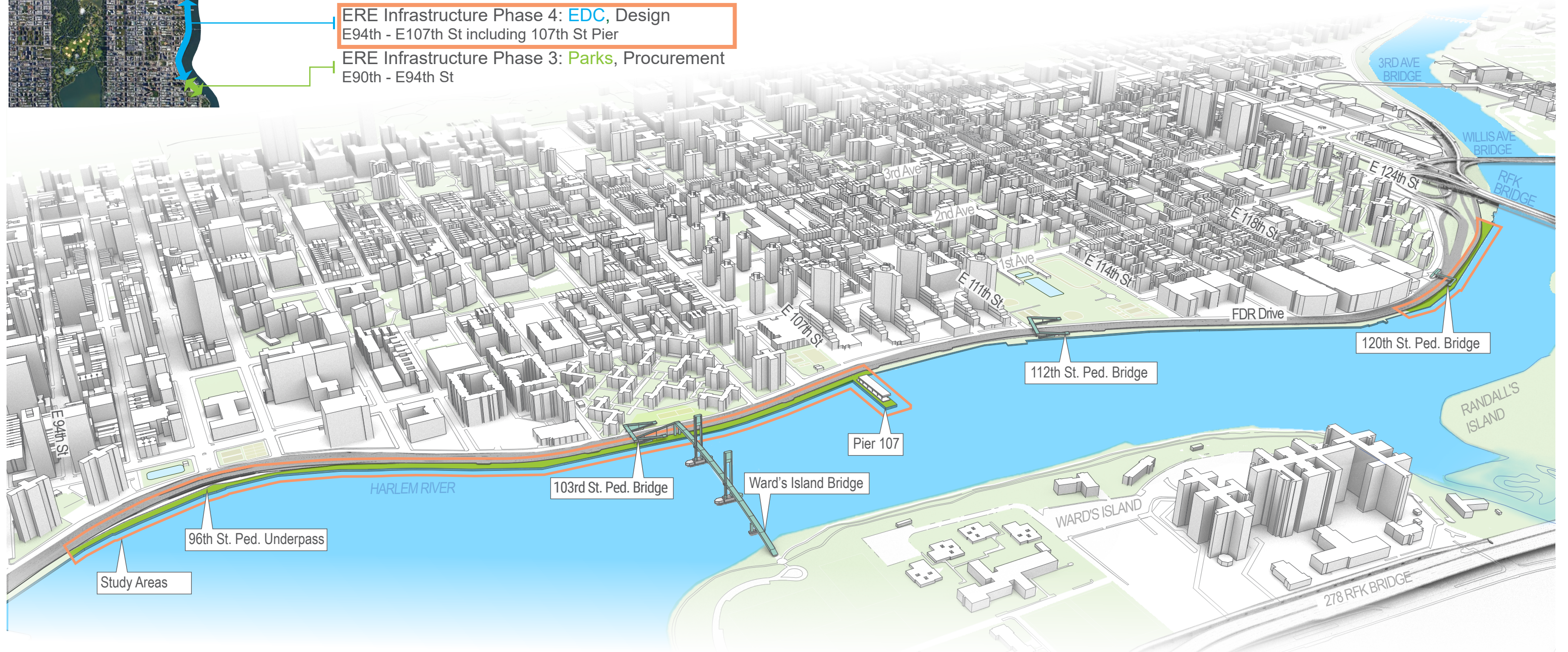


107th Street Pier

Adjoining Projects



- Manhattan Greenway Harlem River
Greenway Infrastructure: **EDC**, Design
E125th - E132nd Streets
- ERE Infrastructure Phase 4: EDC, Design**
E117th - E124th St
- ERE Infrastructure Phase 2: **Parks**, Procurement
E114th - E117th St
- ERE Infrastructure Phase 4: EDC, Design**
E94th - E107th St including 107th St Pier
- ERE Infrastructure Phase 3: **Parks**, Procurement
E90th - E94th St



107th STREET PIER and BOBBY WAGNER WALK



COMMUNITY ENGAGEMENT SUMMARY

Community Engagement Process



Online Survey

- 332 responses received

Information Meeting - Jan 25

- 55 attendees

Workshop #1 - Virtual, Feb 9

- 35 attendees

Workshop #1 - In-Person, Feb 13

- 25 attendees

Esplanade Walkthrough - Feb 11

- 34 attendees + 1 dog

Pop Up - Feb 26

- Met 66 neighbors

Community Board 11 - March 2

- Parks Committee

Community Board 11 - Jun 1

- Parks Committee

Community Engagement | Online Survey



Image NYC Planning

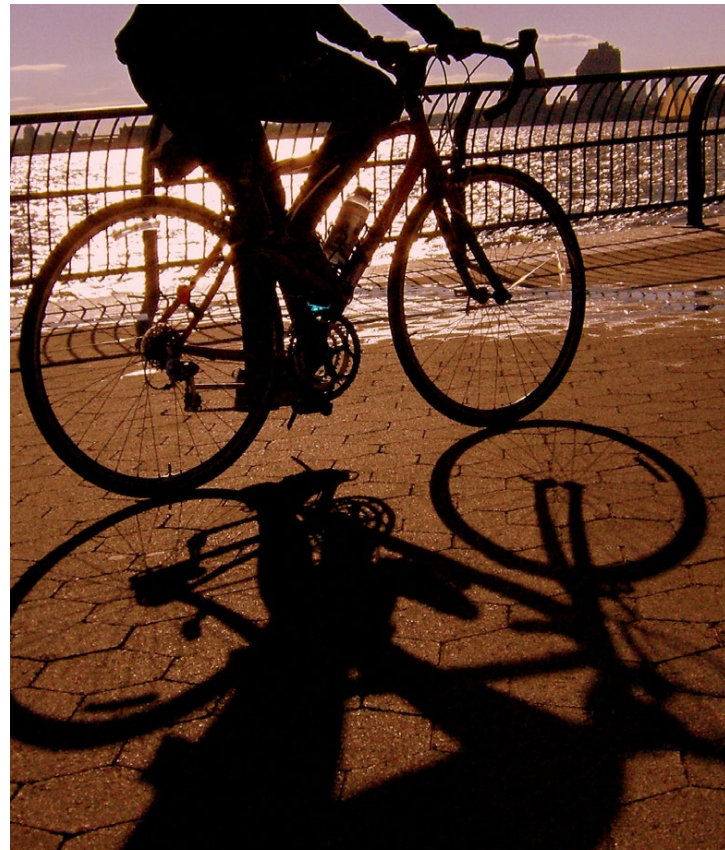
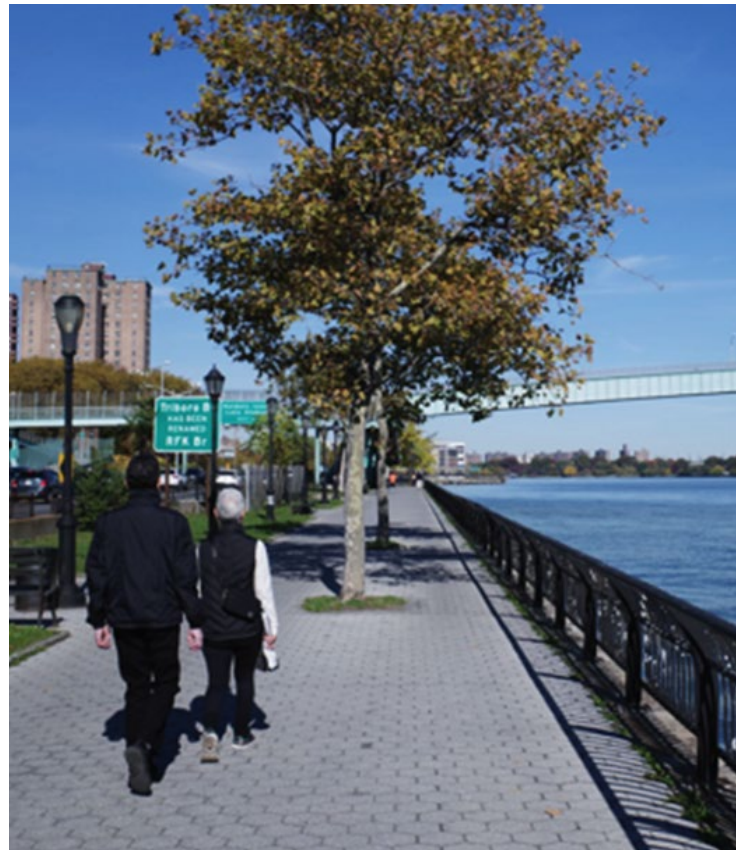
- The survey has reached a **wide range** of people from **different age groups**, with most respondents being over the age of 35. Roughly a quarter of respondents were **seniors**.
- **Most** people surveyed live in **East Harlem**, seconded by people living in the **Upper East Side**.

Community Engagement | Online Survey



- **Almost half** of the people surveyed visit the esplanade **at least once a week.**
- People are arriving **fairly evenly from multiple entrance points**, including:
 - 120th Street Pedestrian Bridge
 - 111th Street Pedestrian Bridge
 - 102nd Street - Wards Island Pedestrian Bridge
 - 96th Street Underpass
 - South of 94th Street

Community Engagement | Online Survey



- **Exercise** by far was the **most popular** use, followed by meeting friends and commuting.
- Most people arrive by **walking**, followed by **biking**.

Community Engagement | Esplanade

- It's **very important** that the Esplanade **provides a safe and continuous path along the waterfront.**
- It's **important** that the Esplanade **provides new activities** and is also a place of **calm and quiet.**
- It's **somewhat not important** that the Esplanade **maintains its current character.**



safe and continuous path



new activities



place of calm and quiet

Community Engagement | Esplanade

- Would like to see/experience...



separated bike lane



tree canopy



bench seating



native planting



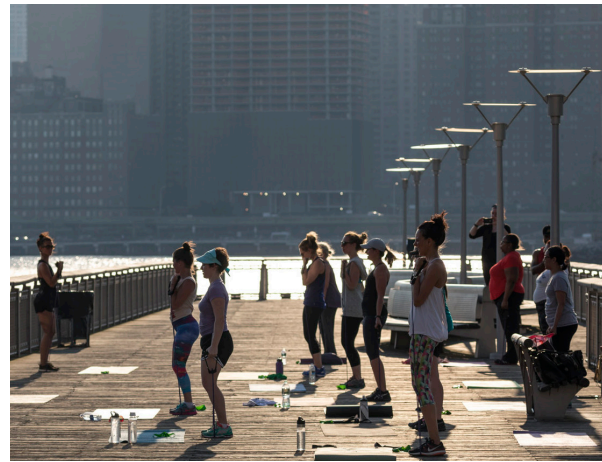
vegetative buffer

Community Engagement | Pier

- It's **very important** that the Pier enhances and promotes **native ecology**, is a place of **community gathering**, allows **interaction with the water**, and reflects the **neighborhood's history**.
- It's also **important** that the Pier is a place of **quiet and comfort**.



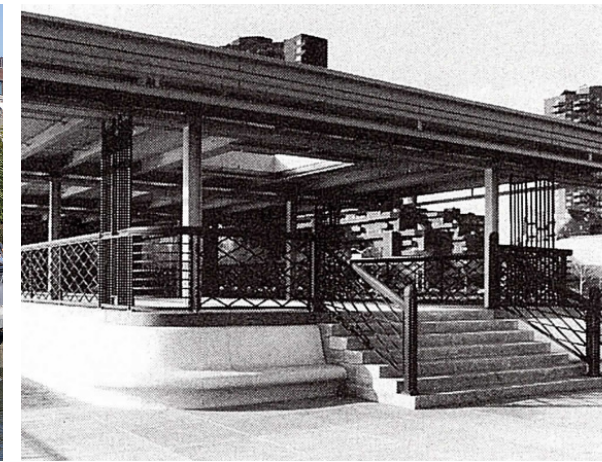
promotes ecology



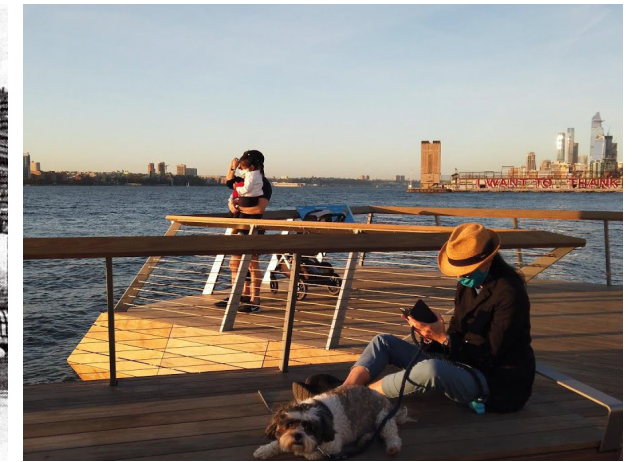
place of gathering



interaction with water



reflects history



place of quiet and comfort

Community Engagement | Pier

- Would like to see/experience...



shade structure



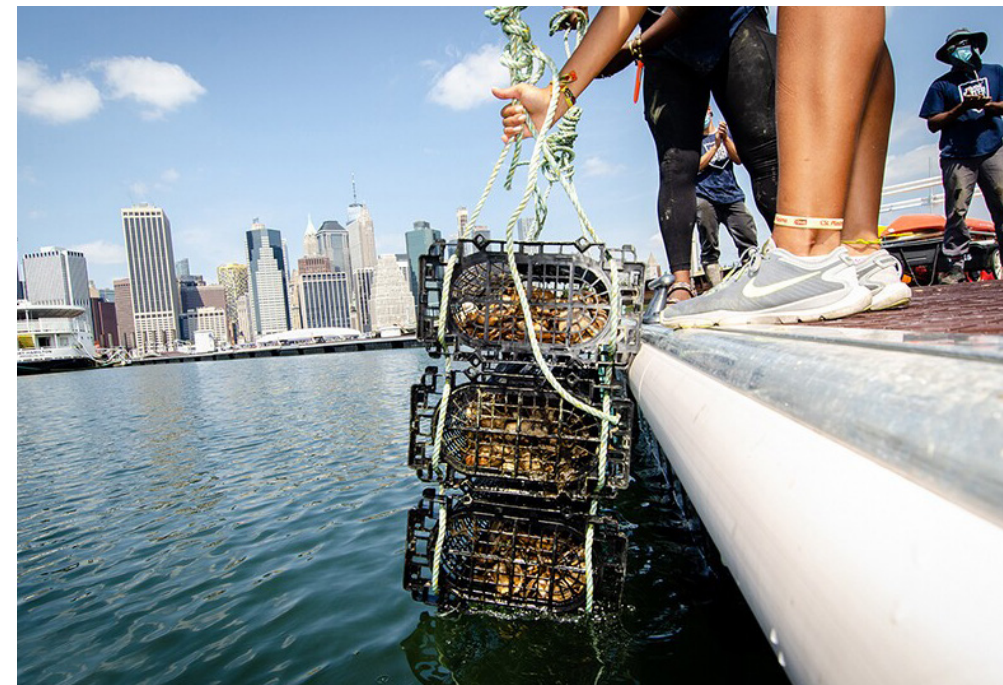
multi-use gathering area



seating



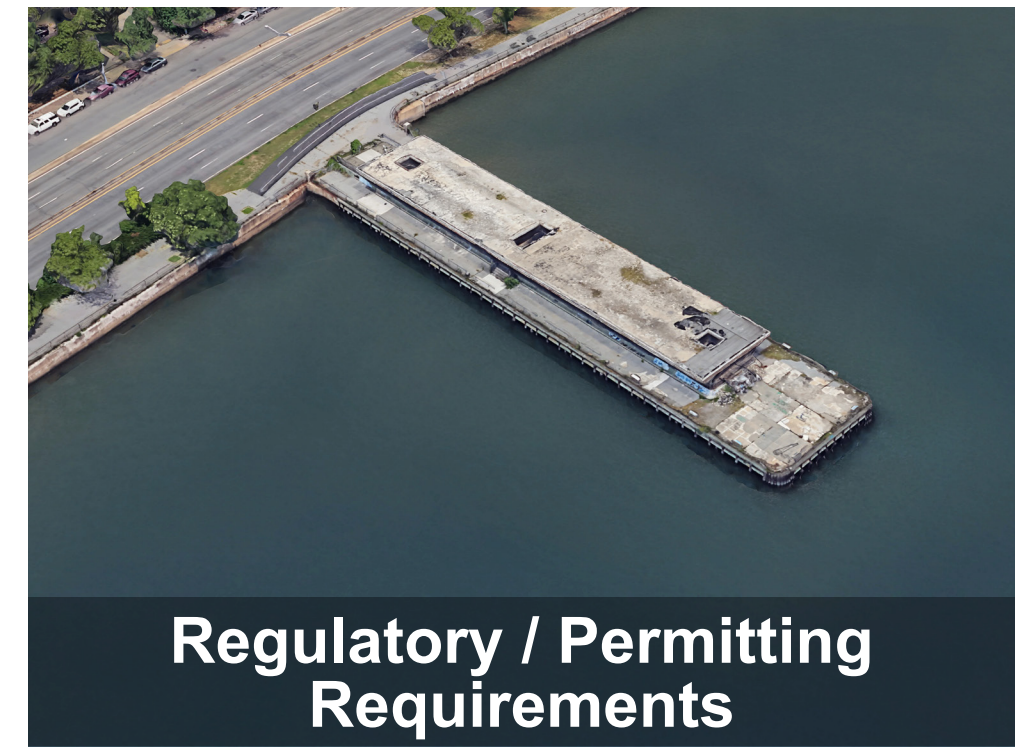
fishing



eco enhancements & learning

PROPOSED CONCEPT DESIGN

Design Considerations



Human-Powered Boating



- NYC Parks provides **36 launch sites** for human-powered boating in locations that are safe and accessible to all New Yorkers, including novice boaters
- In considering any new launch sites, the water body must be safe, calm, and protected
- Due to these safety concerns, a human-powered boat launch site is not possible within this stretch of the Harlem River / East River:
 - Fast currents
 - High vessel traffic (ferries, NYC Sanitation barges, commercial barges, DEP skimmers/sludge tankers)

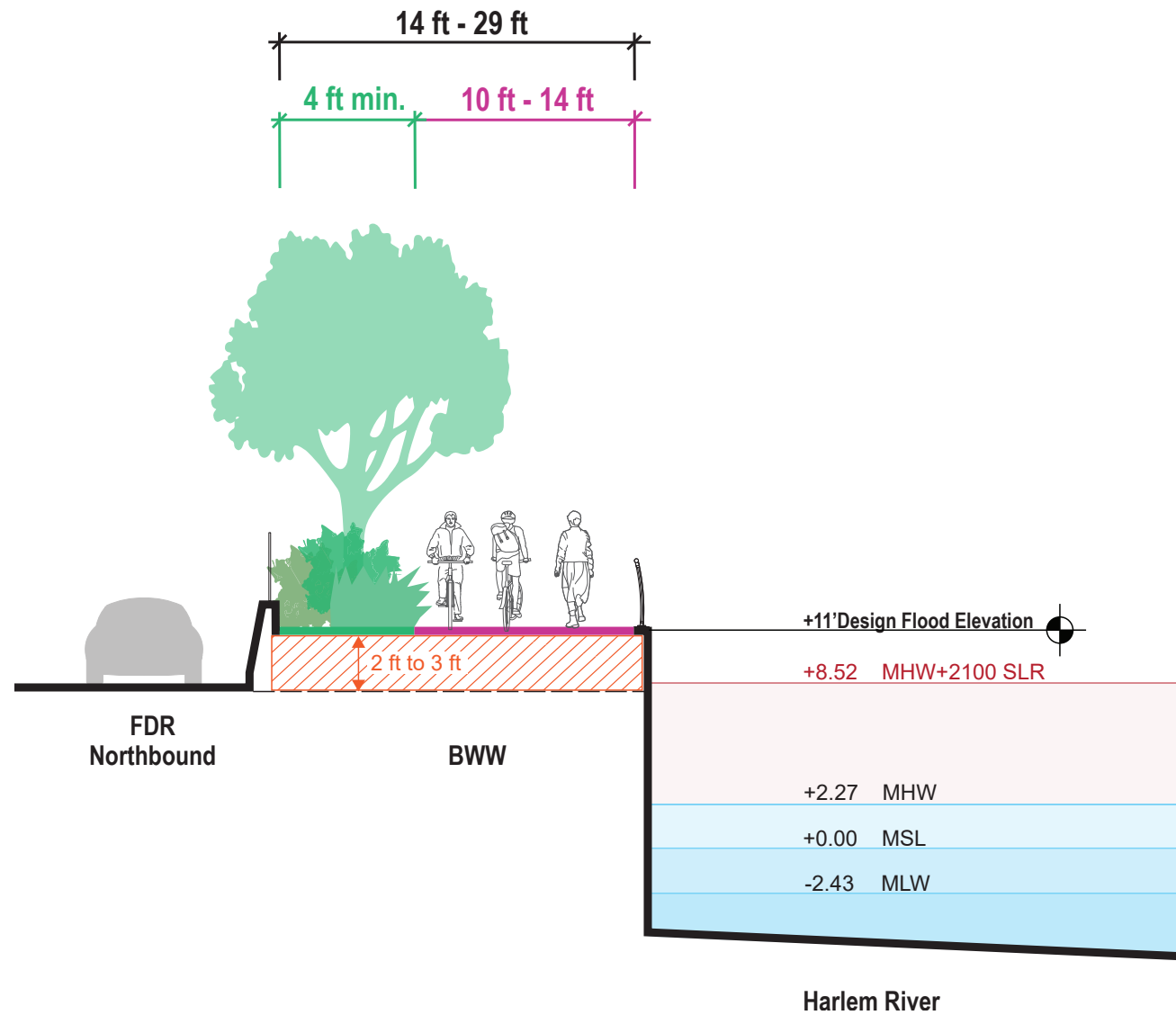
Human-Powered Boating



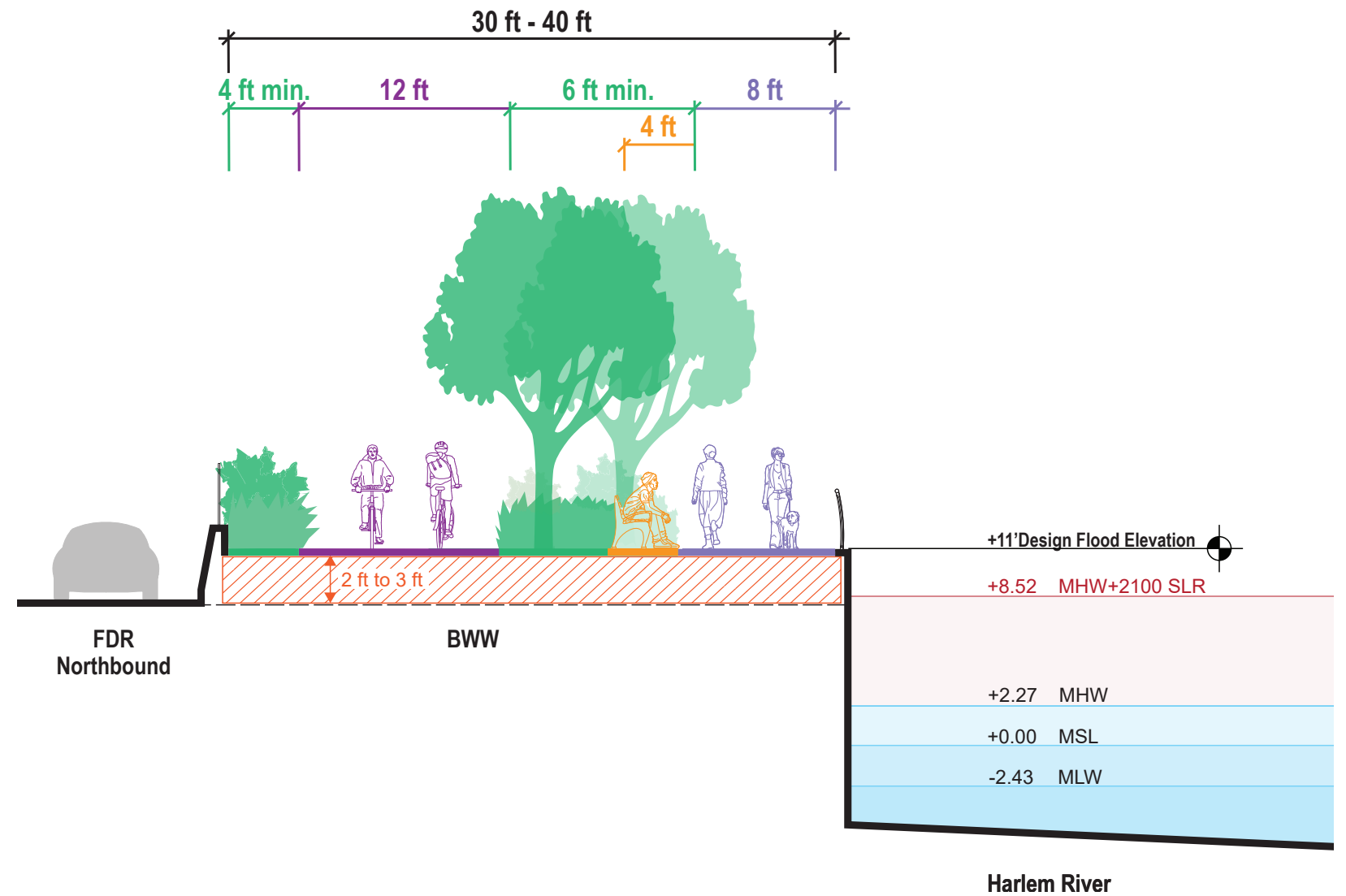
Alternative Shorelines:

- **Randall's Island**
 - Existing kayak launch and direct bridge access
- **NYC Parks Kayak Sites**
 - <https://www.nycgovparks.org/facilities/kayak>

Concept Section



NARROWER ESPLANADE



WIDER ESPLANADE

Design Parameters:

Planting minimum width: 4 ft

Planting with shade tree minimum width: 6 ft

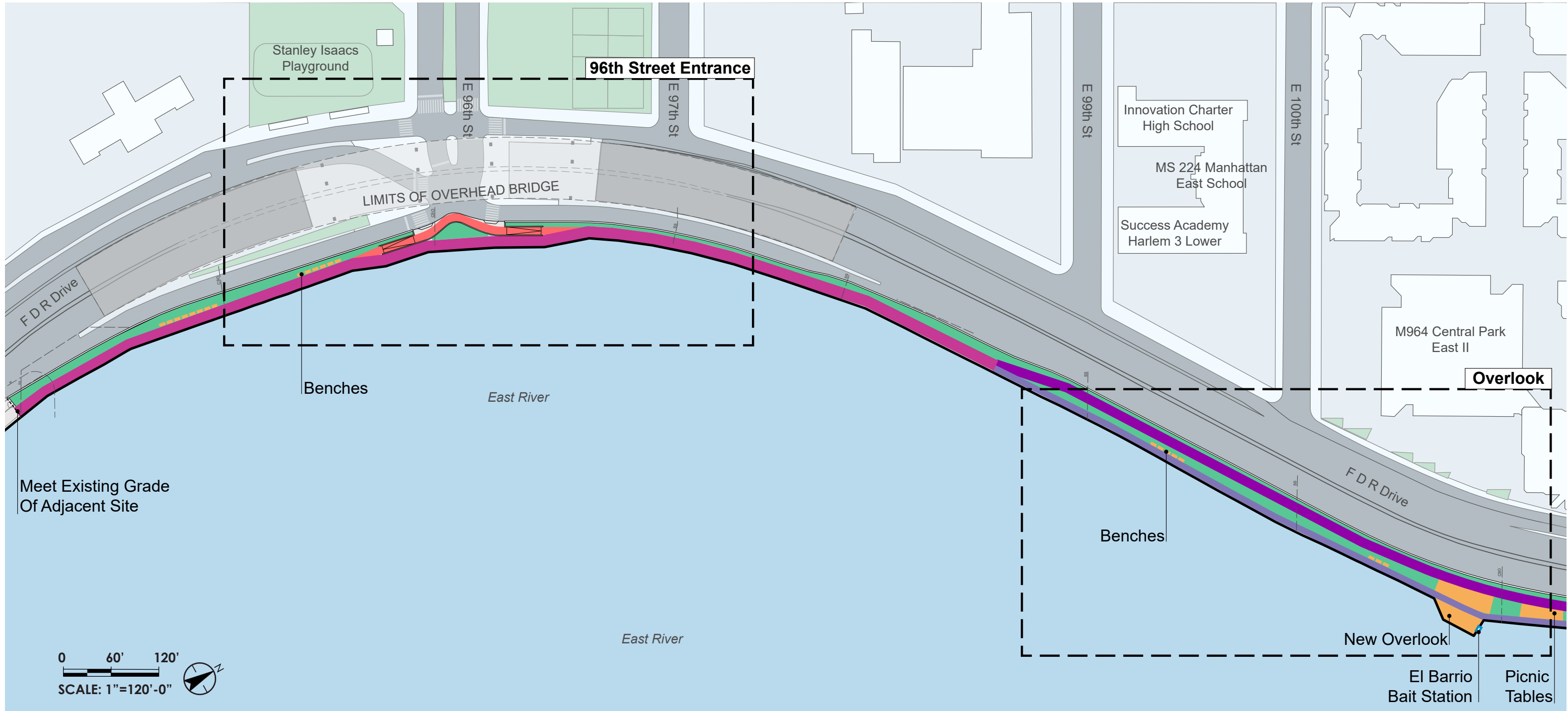
Separated bike lane clearance: 12 ft

Separated walkway clearance: 8 ft

Shared use path clearance: 14 ft

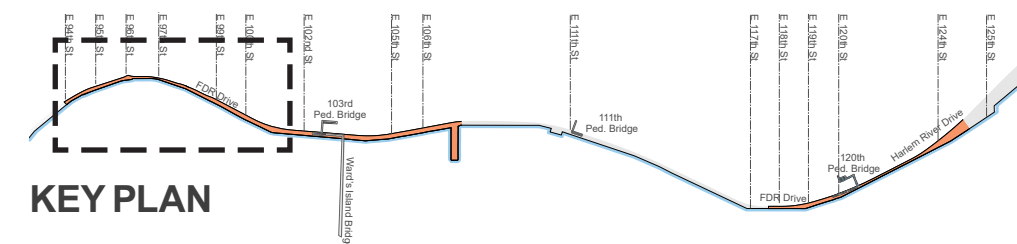
Minimum shared use path clearance: 10 ft

Concept Plan | 94th-101st Street



Legend

- 14 ft Shared Use Path
- 12 ft Separated Bike Lane
- Planted Area
- Bench
- 10 ft Shared Use Path
- 8 ft Separated Walkway
- Gathering / Plaza / Flex Space



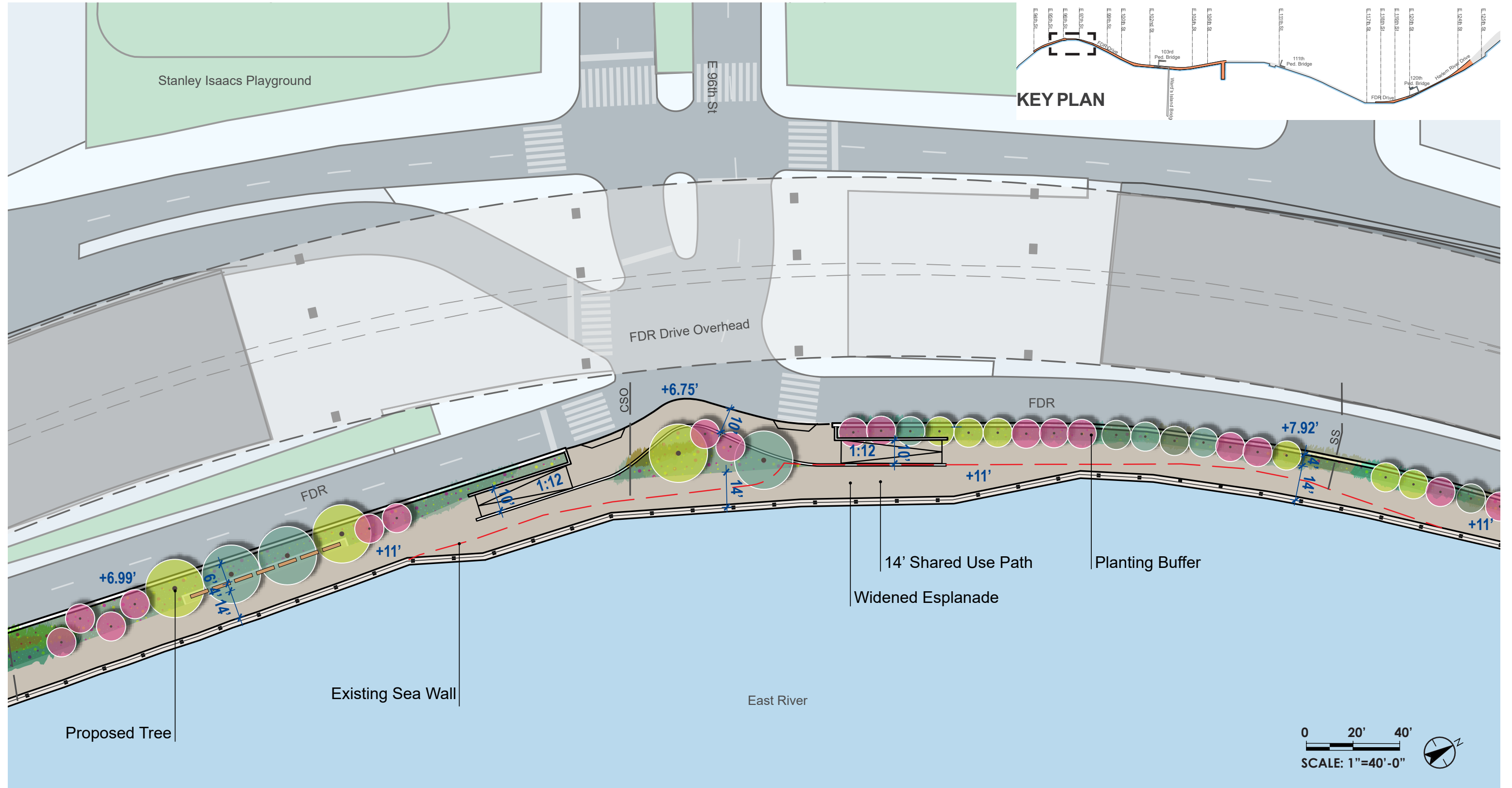
107th STREET PIER and BOBBY WAGNER WALK



Stantec MARVEL

July 11, 2023 | 23

Enlargement Plan | 96th Street Entrance



107th STREET PIER and BOBBY WAGNER WALK



Stantec MARVEL

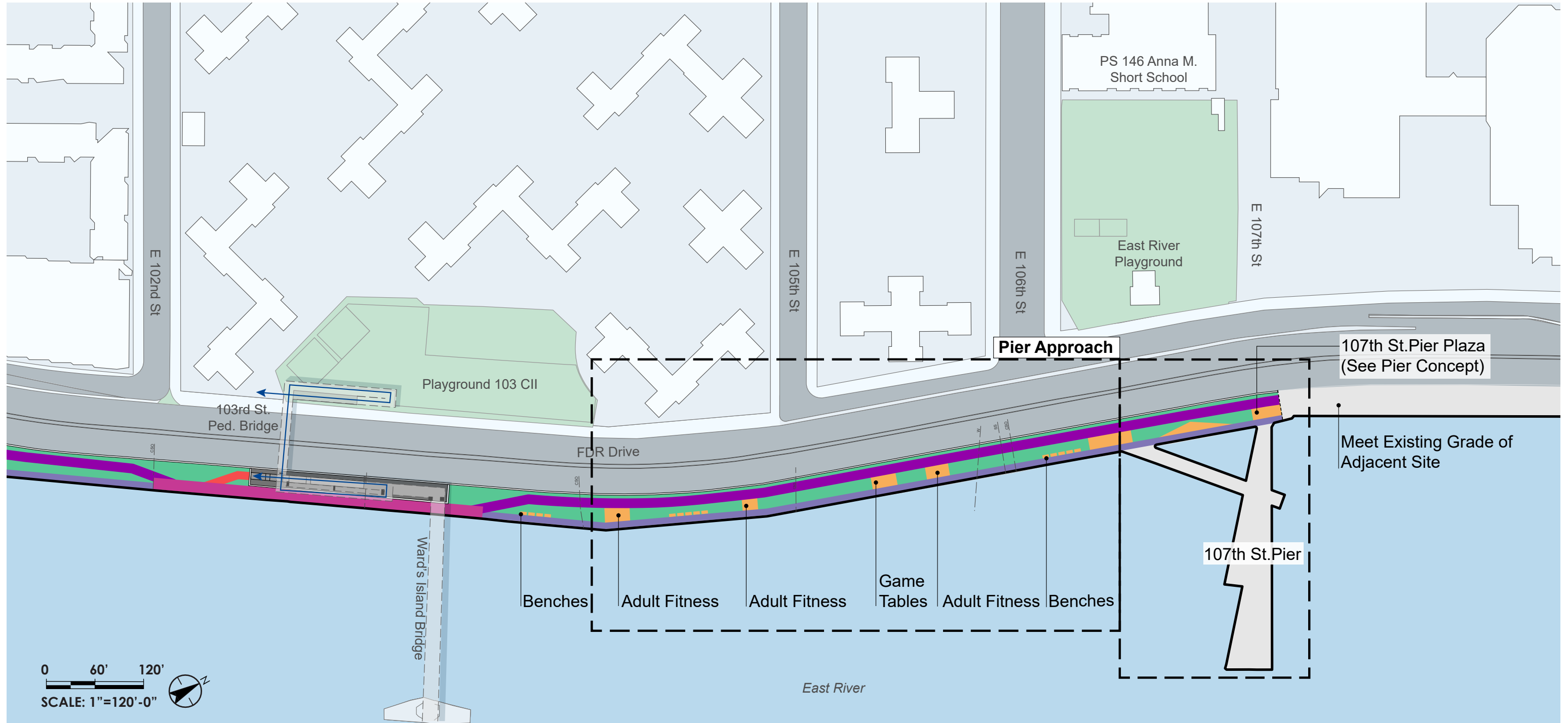
July 11, 2023 | 24

Enlargement | Overlook - 100th Street



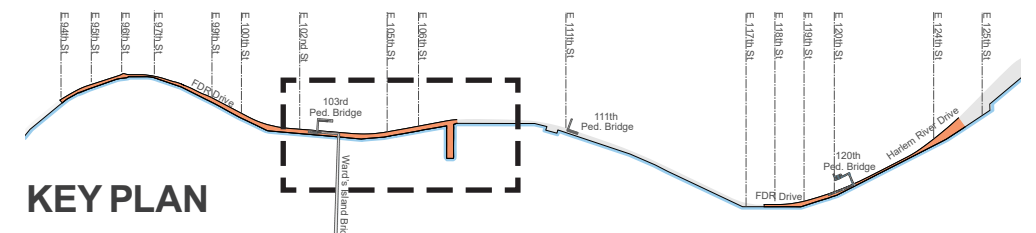
107th STREET PIER and BOBBY WAGNER WALK

Concept Plan | 102nd-107th Street



Legend

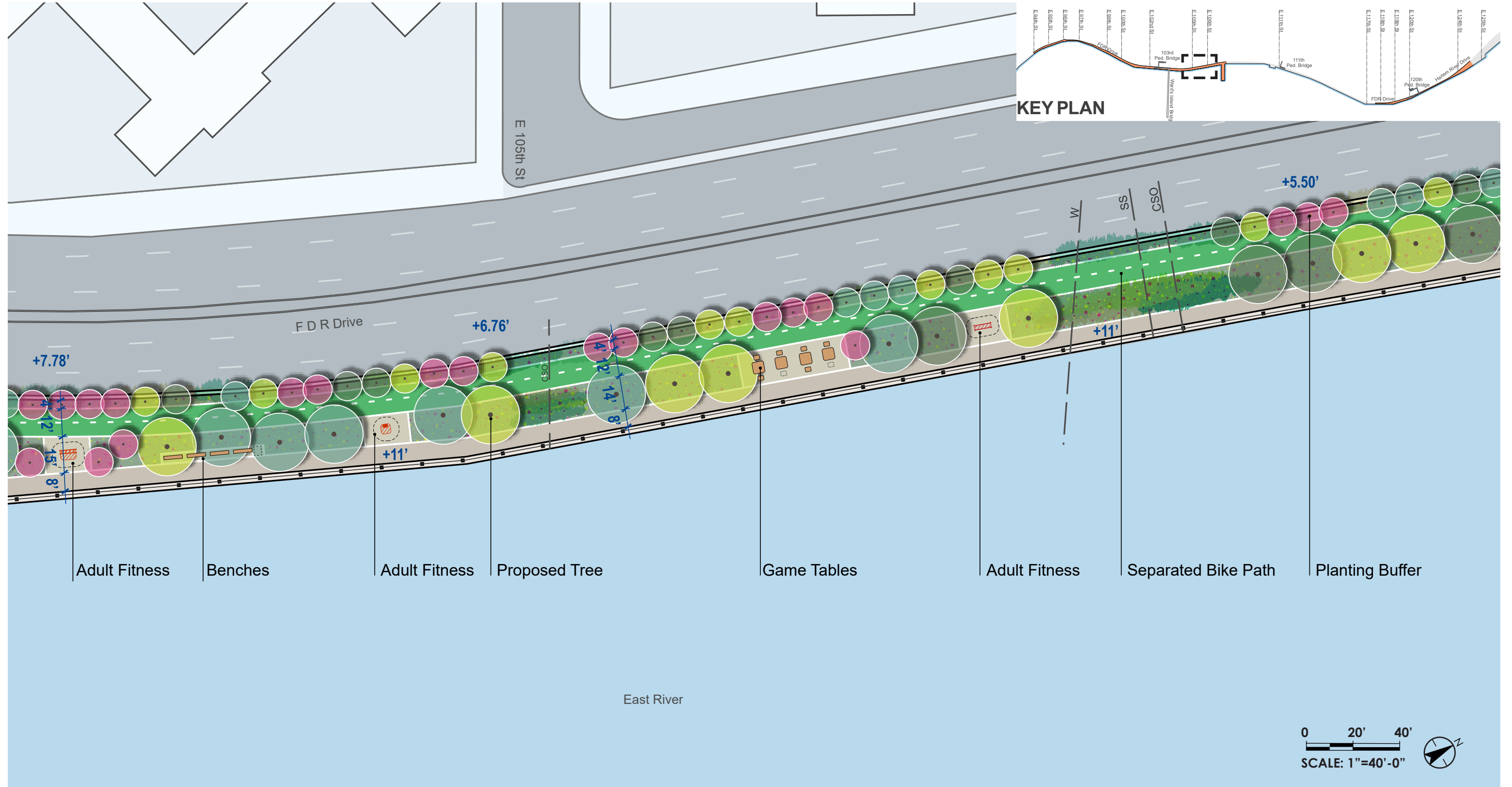
- 14 ft Shared Use Path
- 12 ft Separated Bike Lane
- Planted Area
- Bench
- 10 ft Shared Use Path
- 8 ft Separated Walkway
- Gathering / Plaza / Flex Space



107th STREET PIER and BOBBY WAGNER WALK

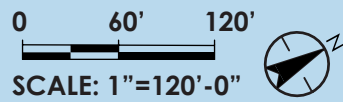
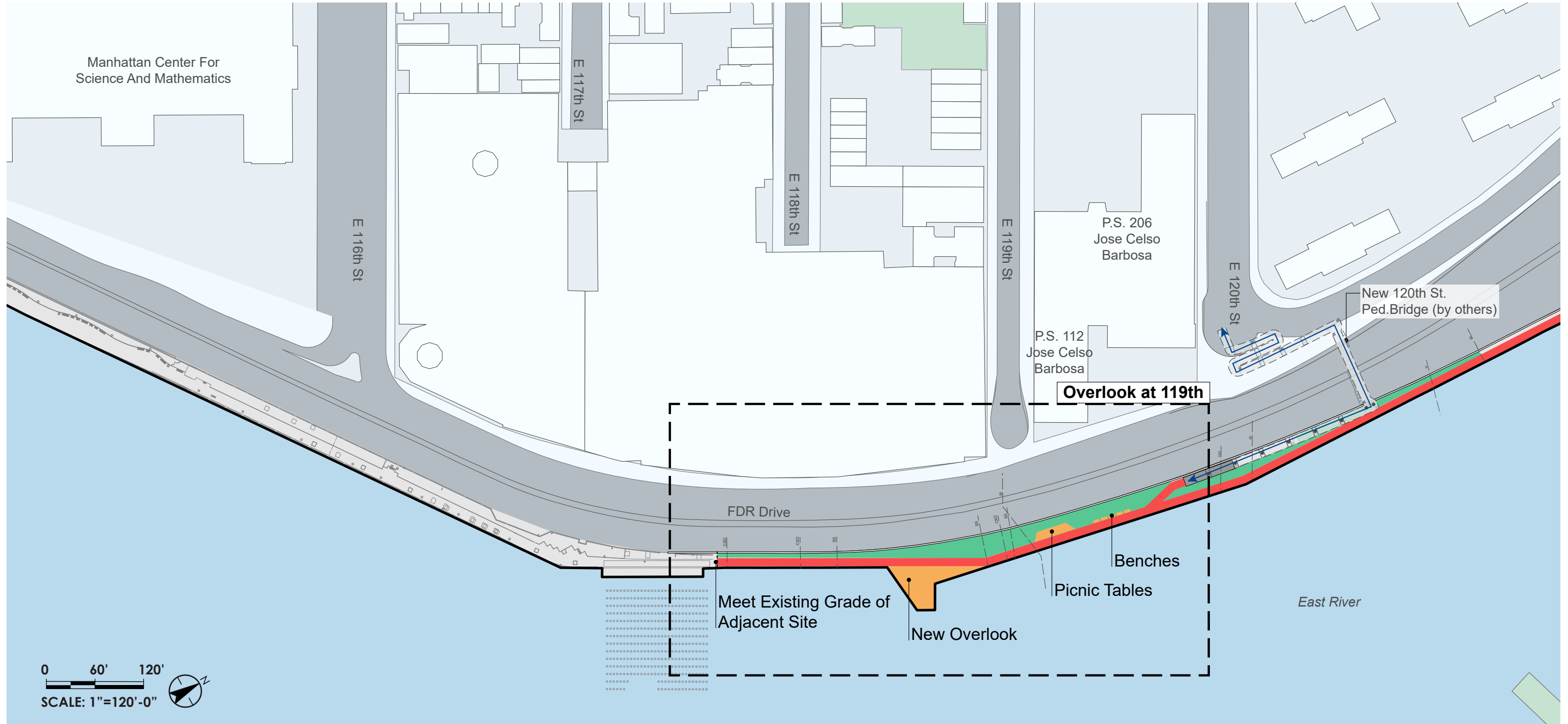


Enlargement | Pier Approach



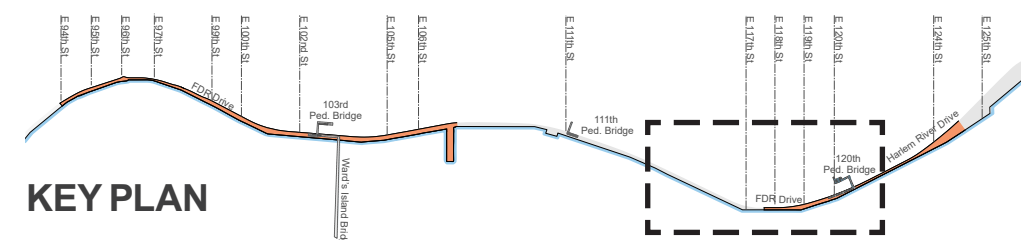
107th STREET PIER and BOBBY WAGNER WALK

Concept Plan | 117th-121st Street



Legend

- 14 ft Shared Use Path
- 12 ft Separated Bike Lane
- Planted Area
- Bench
- 10 ft Shared Use Path
- 8 ft Separated Walkway
- Gathering / Plaza / Flex Space



107th STREET PIER and BOBBY WAGNER WALK



Enlargement | Overlook - 119th Street

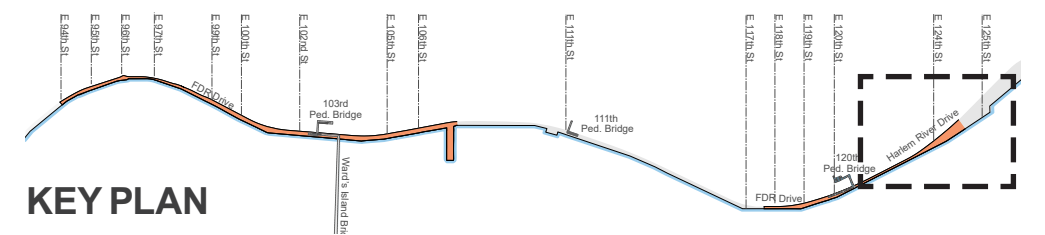


Concept Plan | 122nd-124th Street



Legend

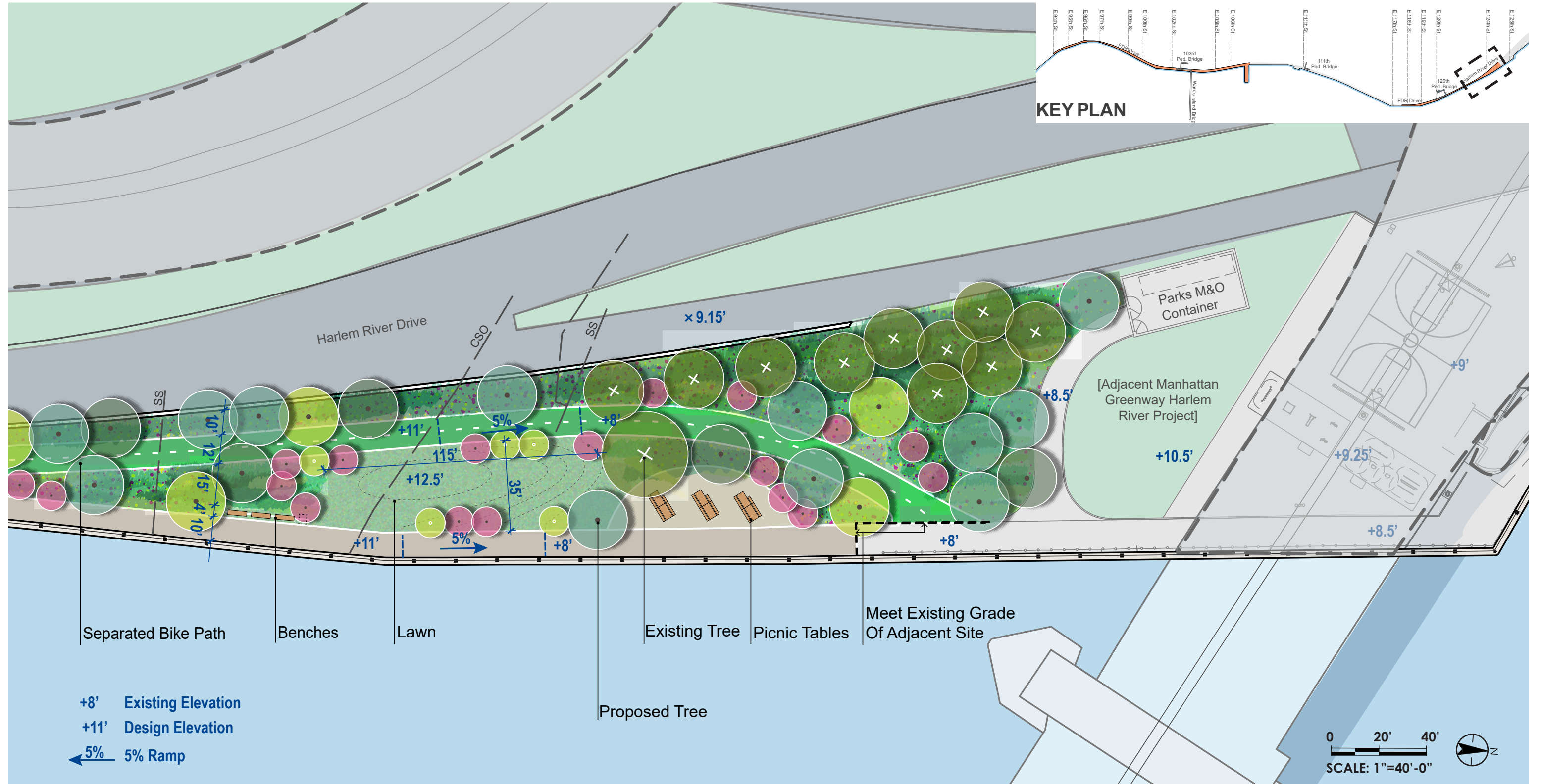
- 14 ft Shared Use Path
- 12-ft Separated Bike Lane
- Planted Area
- Bench
- 10 ft Shared Use Path
- 8-ft Separated Walkway
- Gathering / Plaza / Flex Space



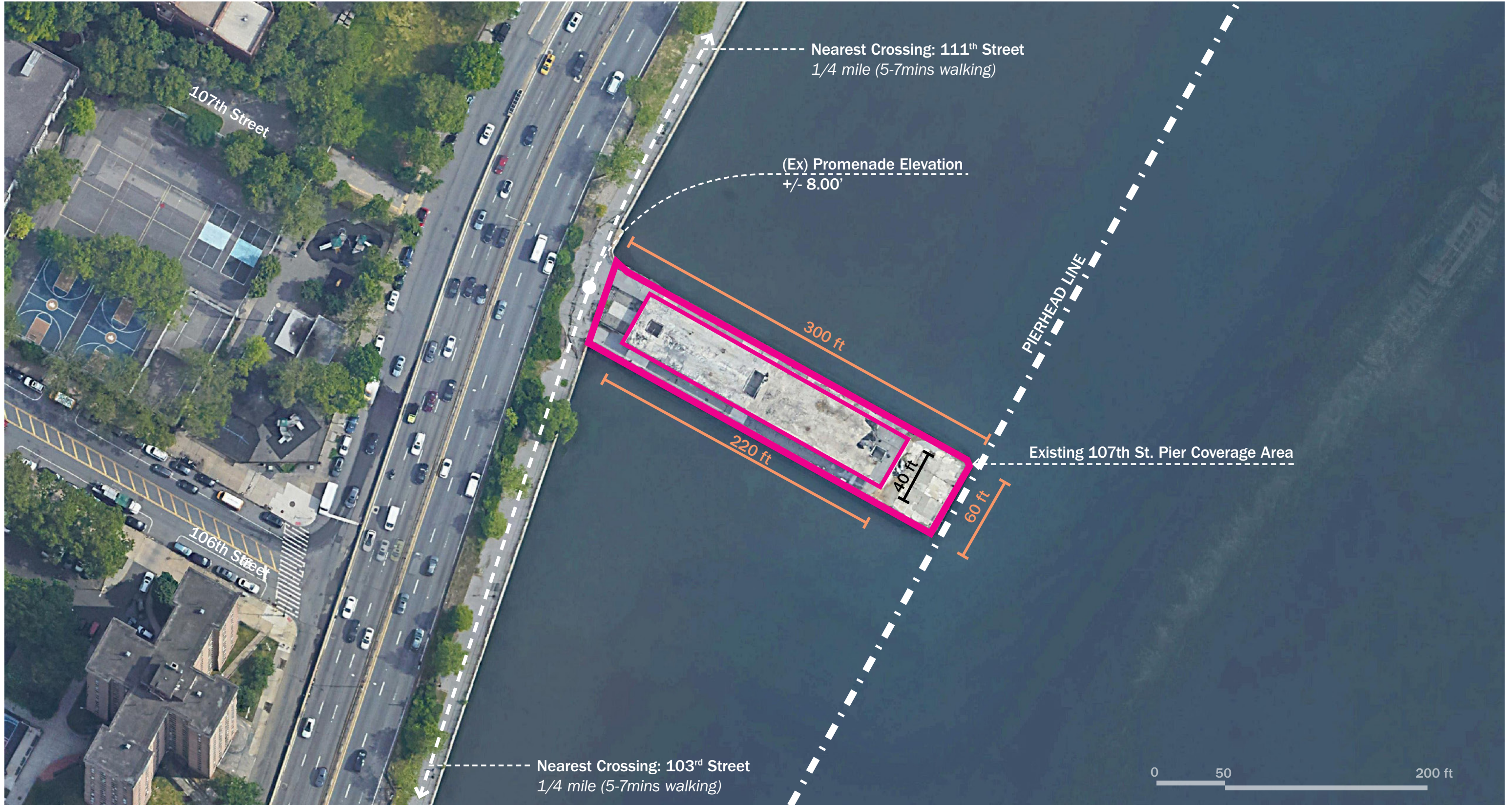
107th STREET PIER and BOBBY WAGNER WALK



Enlargement | Lawn & Picnic Area

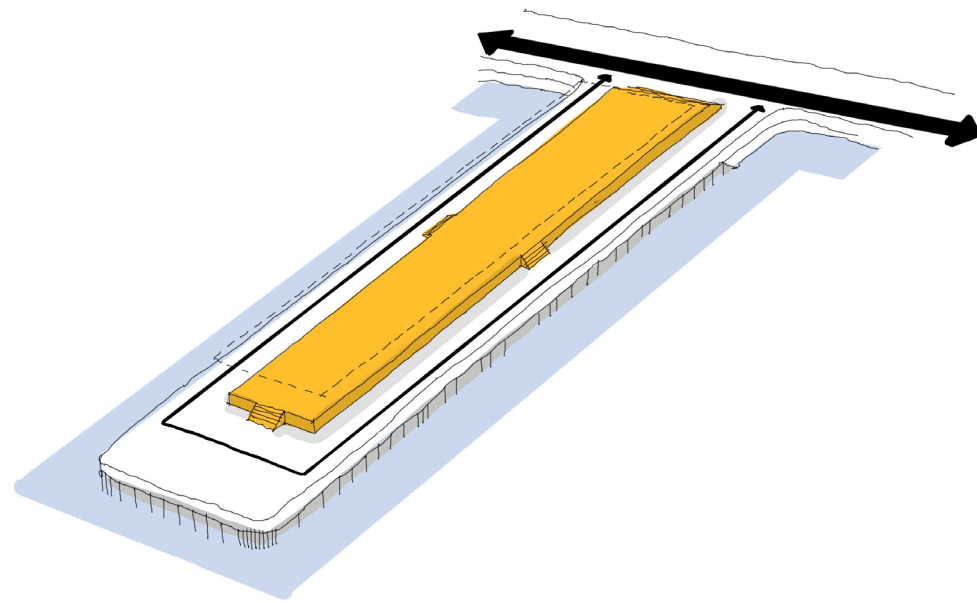


Existing 107th Street Pier | Aerial View



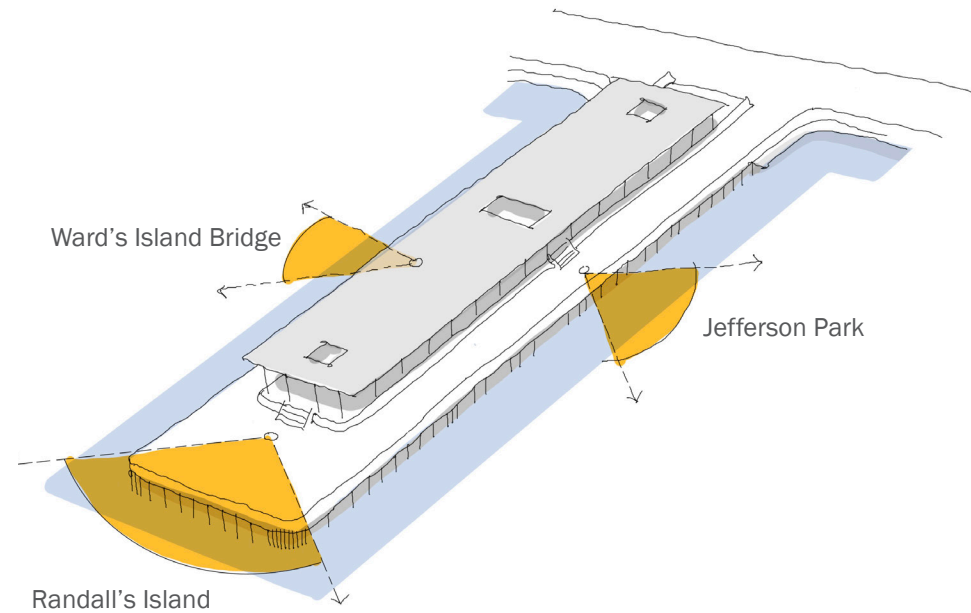
107th STREET PIER and BOBBY WAGNER WALK

Existing 107th Street Pier | Site Observations



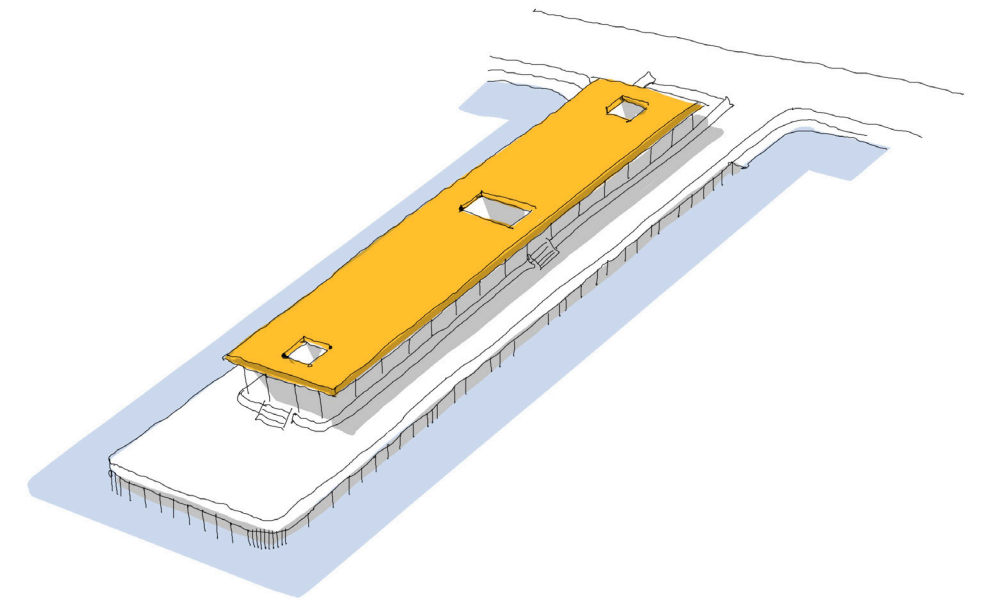
CIRCULATION

The existing pier is separated from the flow of circulation along the esplanade, and the raised central platform is only accessible by stairs.



VIEWS

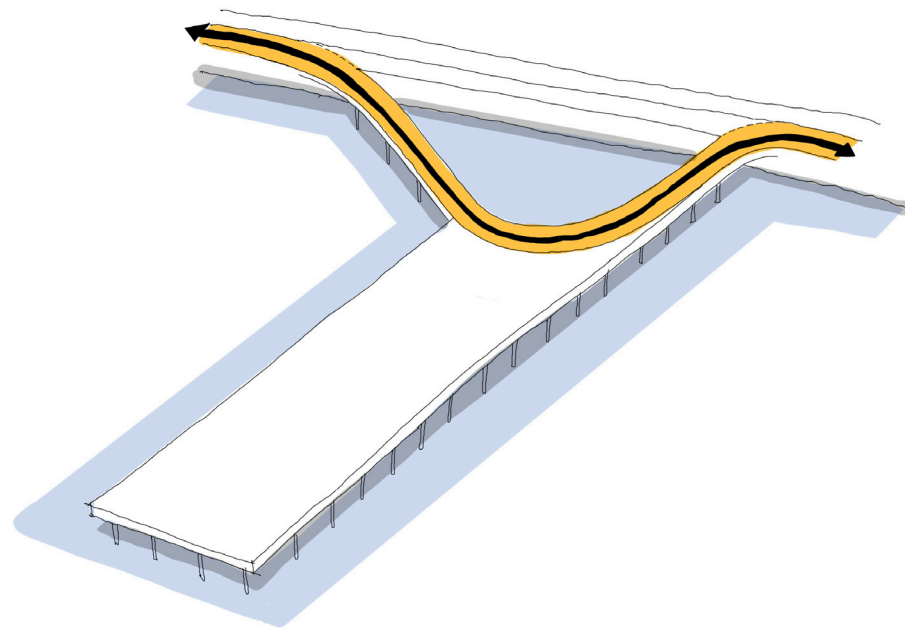
The end of the pier offers unobstructed views towards the river. Other elements are oriented towards views of the city.



SHADE

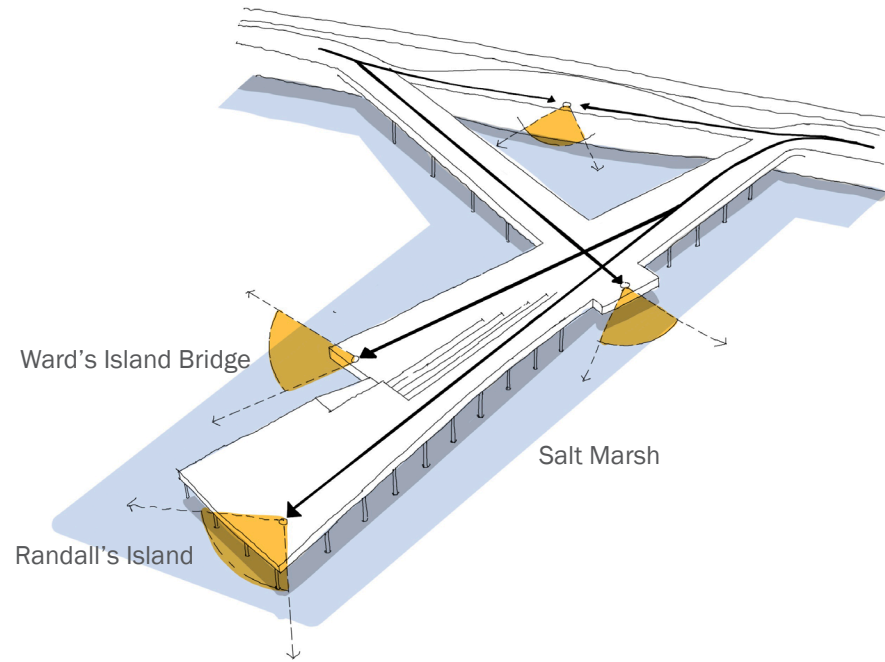
The low canopy creates a dark zone, with a long, narrow shape that is not inviting as a gathering area, and casts a shadow that brings an adverse impact on marine habitats in the East River.

Proposed 107th Street Pier | Form Development



CIRCULATION

The pier is connected to the esplanade at two points, with an angled walk to draw users out over the water.



VIEWS

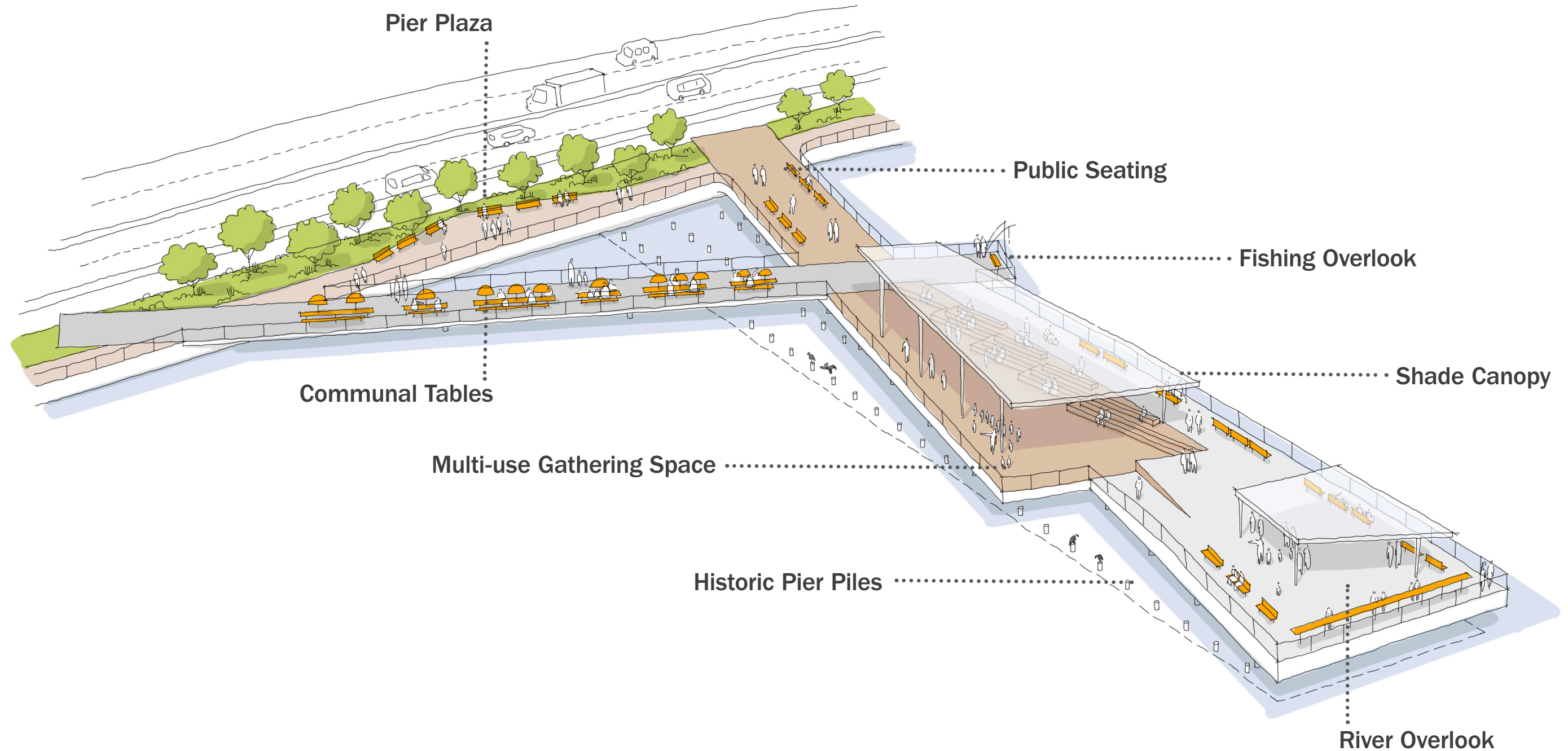
A primary gathering space is located at the center of the pier, with secondary spaces and overlooks oriented to key views



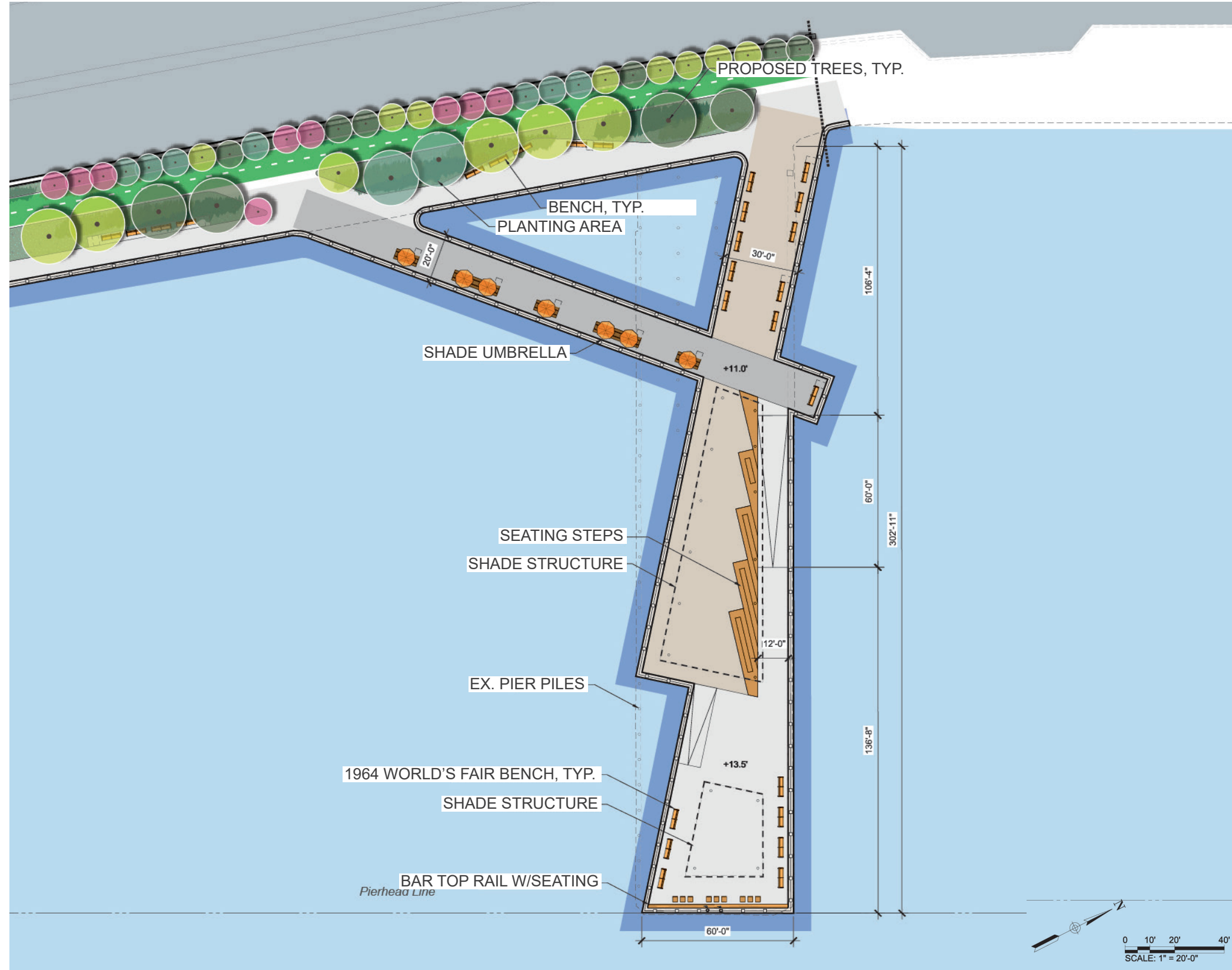
SHADE

Two shade structures will shelter the different areas of the pier, supporting various uses. By carefully placing them, the pier is able to mitigate the impact on the marine habitats by reducing shade casted on water.

107th Street Pier | Aerial Sketch



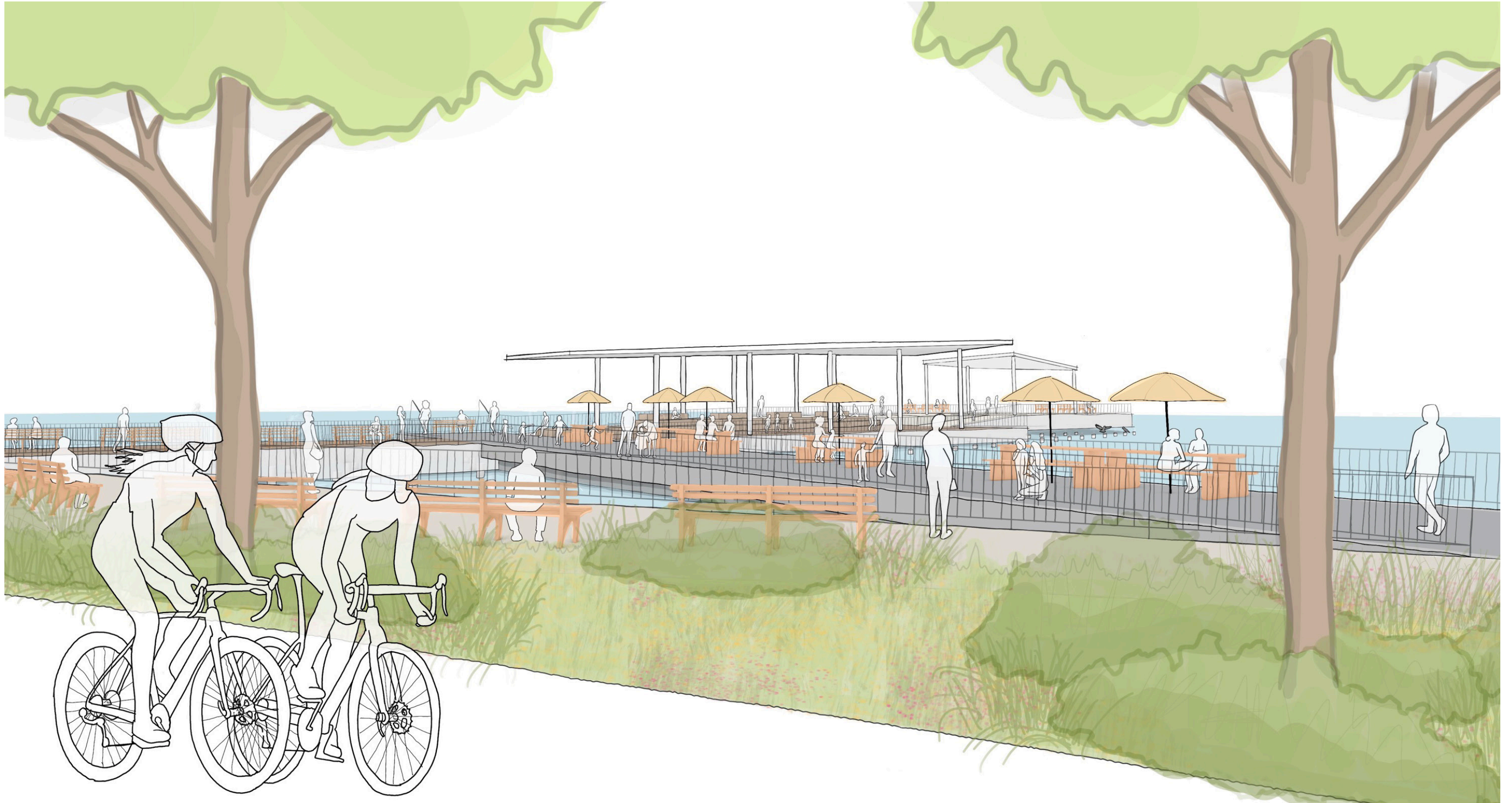
107th Street Pier | Concept Plan



LEGEND

- Passive Recreation
- Planting Area
- Shade Structure Outline

107th Street Pier | Ground Level View



107th STREET PIER and BOBBY WAGNER WALK

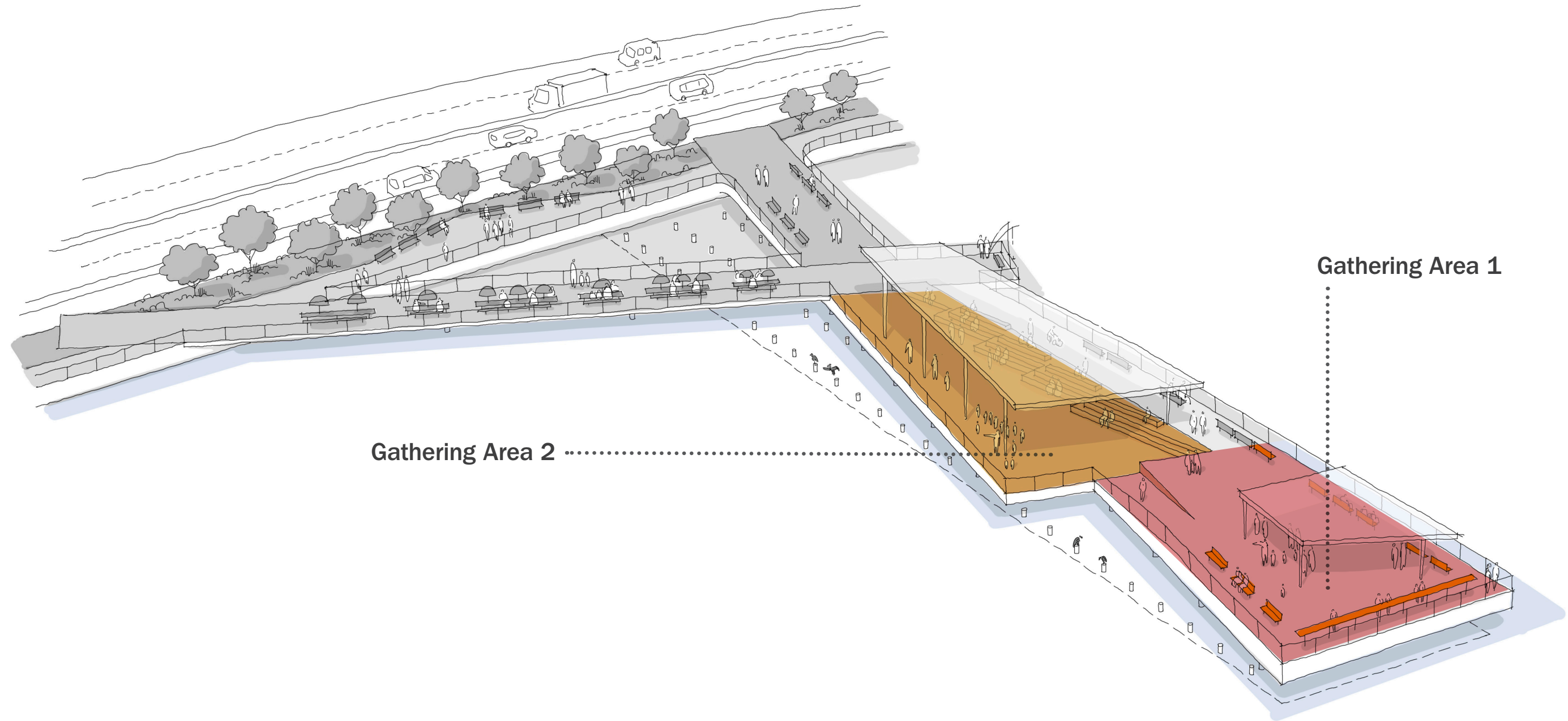


Stantec MARVEL

July 11, 2023 | 37

BREAKOUT SESSION DISCUSSION

Pier | What type of gathering space would you like to see here?



Pier | What type of gathering spaces would you like to see here?



Flexible Community Use



Lounging



Environmental Education



Performance/Event Space



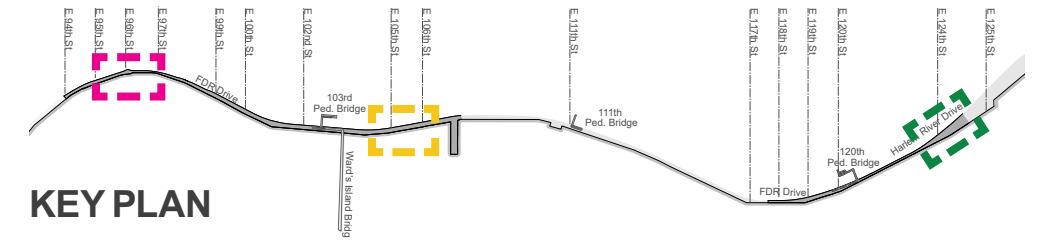
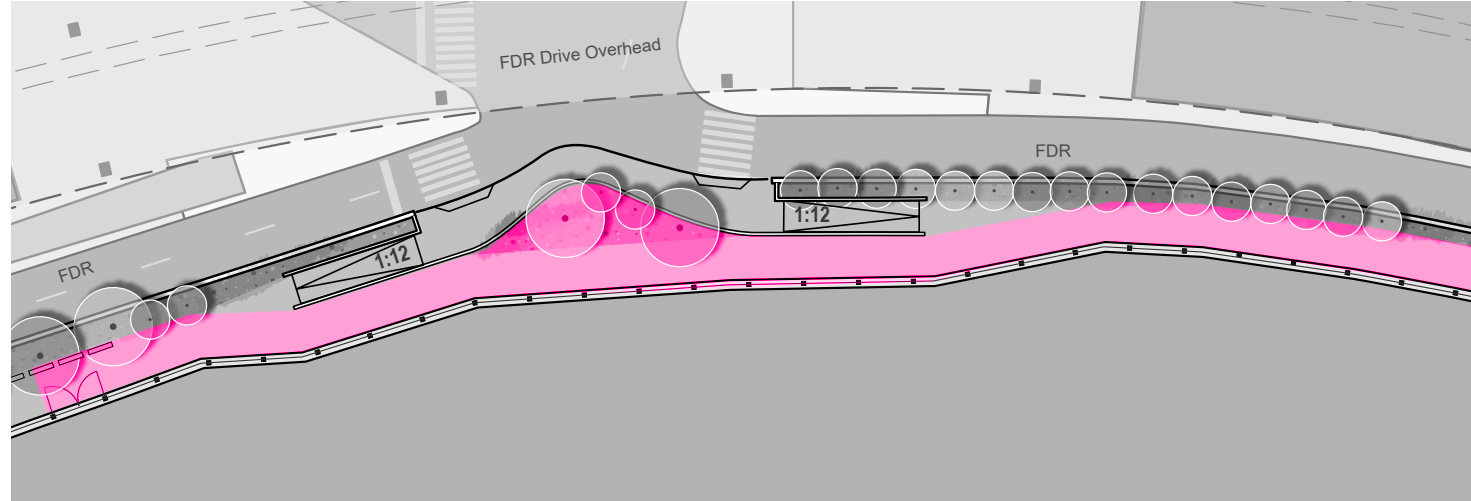
Outdoor Classroom



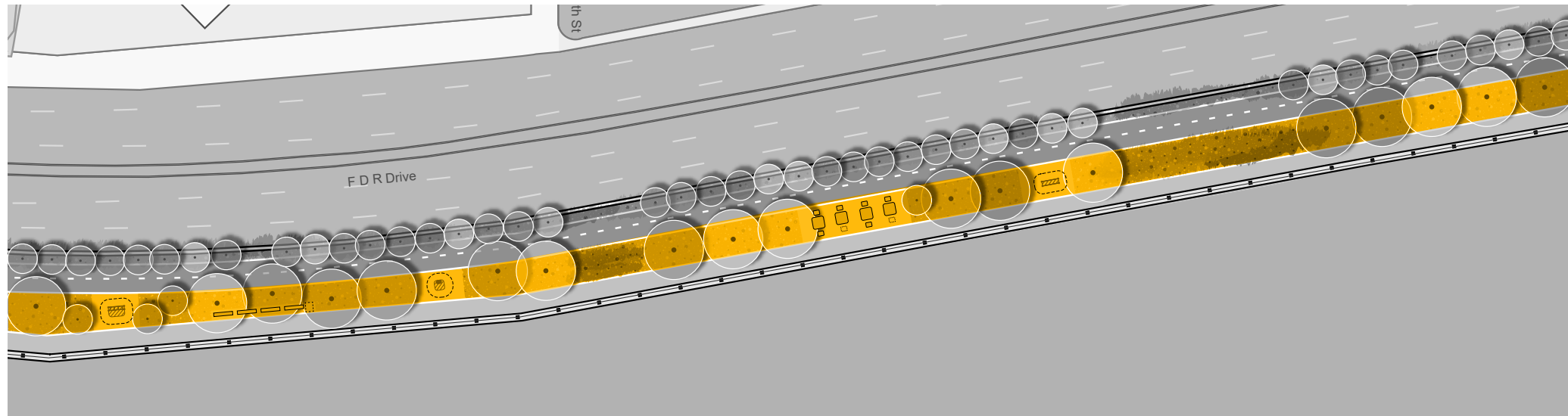
Picnic Area

Esplanade | What kind of other activities would you like to do here?

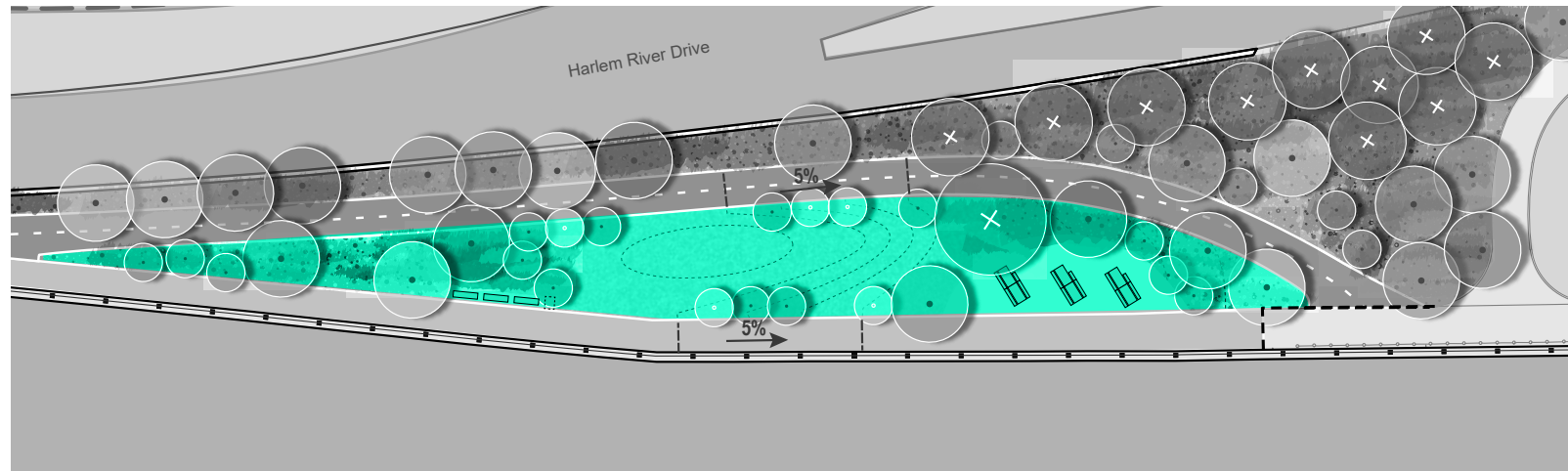
96th Street Entrance



Linear Activity Area



Lawn & Picnic Area



Esplanade | What kind of other activities would you like to do here?



Railing Seating



Family Picnic



Sun Lounge



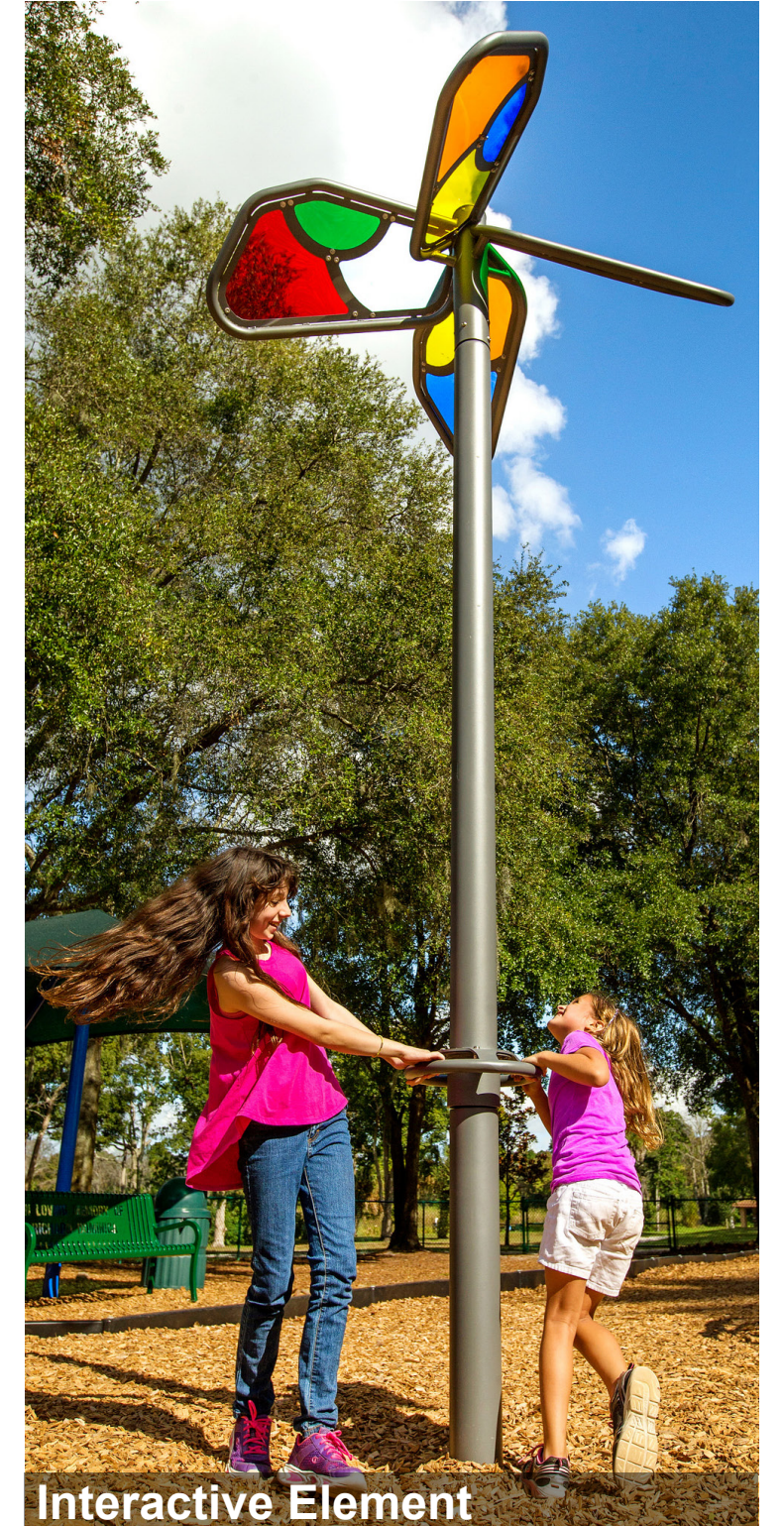
Outdoor Fitness



Food Cart



Interactive Element



Interactive Element

BREAKOUT SESSION SHARE BACK

NEXT STEPS:

- Public Design Commission - Concept Design
 - Submission - July 2023
 - Anticipated Review - August 2023
- Public Art Presentations - September 2023
- Community Board Meeting - Winter 2023

AND FOR MORE INFO:

- <https://edc.nyc/project/107th-street-pier-bobby-wagner-walk-reconstruction>
- Contact: Pier107BobbyWagnerWalk@stantec.com



THANK YOU!