

## PIER 42

Located along the East River, from Montgomery St to Jackson St, in the borough of Manhattan

November 17, 2020  
NYCEDC, LMDC, NYC PARKS

# PROJECT ROLES/RESPONSIBILITIES

- NYC Economic Development Corporation
  - Managing agency for design and construction
- NYC Department of Parks & Recreation
  - Site owner and manager, steward of the Master Plan process, coordination with East Side Coastal Resiliency project (ESCR)
- Lower Manhattan Development Corporation
  - Funder and sponsor of Pier 42 Park work
- NYC Department of Design & Construction
  - Coordination with ESCR
- LiRo Program and Construction Management
  - Construction Manager under contract with NYCEDC
  - Holds contracts with individual contractors

# COMMUNITY MEETINGS

Recap of previous Pier 42 Master Plan engagements:

- 6/27/2012: CB3 Meeting #1
- 9/30/2012: Pier 42 Walking tour w/ community
- 10/4/2012: CB3 Meeting #2: LISTENING PROGRAMMING
- 12/16/2012: CAAAV Meeting
- 1/23/2013: CB3 Meeting #3: LISTENING PROGRAMMING
- 1/28/2013: Seward Park Coop
- 1/31/2013: Local High Schools
- 2/5/2013: NYCHA Houses: LaGuardia, Vladeck, Baruch and Rutgers
- 2/5/2013: Lower East Side Ecology Center
- 2/15/2013: Blueway Plan, WXY architecture + urban design
- 2/27/2013: PS 134
- 5/9/2013: CB3 Meeting #4: MASTER PLAN CONCEPTS
- 1/6/2014: CB3 Meeting #5: THE MASTER PLAN
- PDC Conceptual Meeting

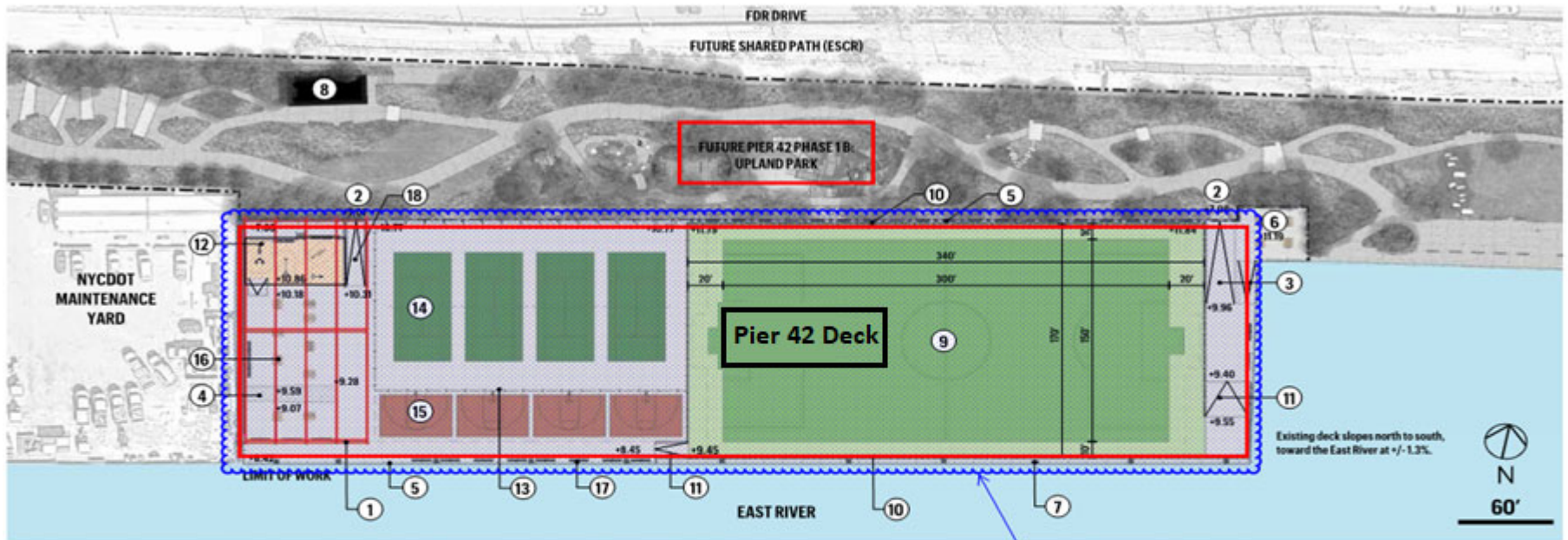
# COMMUNITY MEETINGS

Recap of previous EDC engagements:

- 7/27/2017: Added programming for the playground and comfort station
- 9/14/2017: Presented the conceptual park design
- 5/10/2018: Presented design for PDC Preliminary Approval at CB3 Parks Committee
- 7/12/2019: Presented updated design for PDC Final Approval at CB3 Parks Committee
- 2/13/2020: Presented the Interim Pier Deck design at CB3 Parks Committee
- 3/09/2020: Presented the updated Interim Pier Deck design at Gouverneur Gardens
- 11/12/2020: Present final design and construction schedule at CB3 Parks Committee
- **11/17/2020: Present final design and construction schedule via Zoom**

# DESIGN OVERVIEW

- Phase 1A** – Abatement and Demolition of existing shed – **Complete**
  - Phase 1B** – Design and implementation of a new upland park – Complete Summer 2023 \*
  - Pier 42 Deck** – Design and implementation of pier deck implementation – Complete Summer 2022 \*
- \* = anticipated



- Key**
- |   |   |
|---|---|
| <ul style="list-style-type: none"> <li>1. EXISTING FRAME, PAINTED RED</li> <li>2. DECK ACCESS FROM PIER 42 PHASE 1B: UPLAND PARK</li> <li>3. EXISTING RAMP</li> <li>4. RAISED DECK, TYP.</li> <li>5. EXISTING 8' HEIGHT CHAIN LINK FENCE</li> <li>6. ELEVATED DOCK</li> <li>7. EXISTING BOAT CLEATS, TYP.</li> <li>8. COMFORT STATION</li> <li>9. SOCCER FIELD</li> </ul> | <ul style="list-style-type: none"> <li>10. RAISED CURB AT SOCCER FIELD WITH MODIFIED 16' HEIGHT FENCE</li> <li>11. ACCESS TO SOCCER FIELD (MAX 5% SLOPE)</li> <li>12. OUTDOOR EXERCISE EQUIPMENT AREA</li> <li>13. 16' HEIGHT CHAIN LINK FENCE ON DECK</li> <li>14. TENNIS COURT, TYP OF 4.</li> <li>15. HALF COURT BASKETBALL, TYP OF 4.</li> <li>16. PICNIC TABLE, TYP OF 13.</li> <li>17. BENCH, TYP OF 17.</li> <li>18. MODIFIED RAMP TO COMPLY WITH ADA REGULATIONS</li> </ul> |
|---|---|

Phase 1A - completed 2019

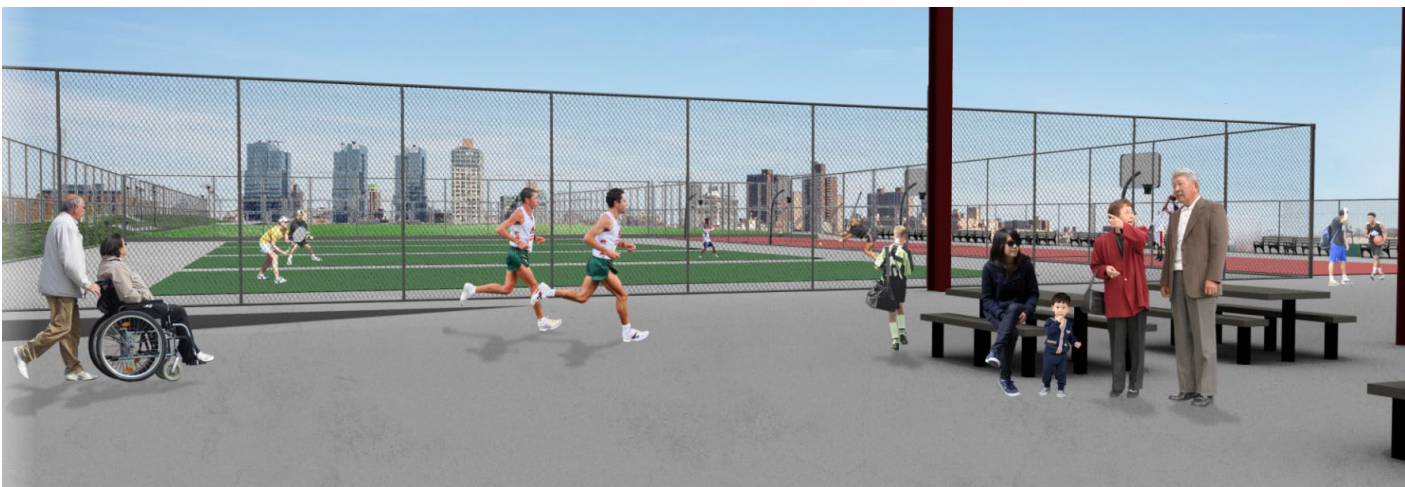
# PROJECT RENDERINGS



# PROJECT RENDERINGS

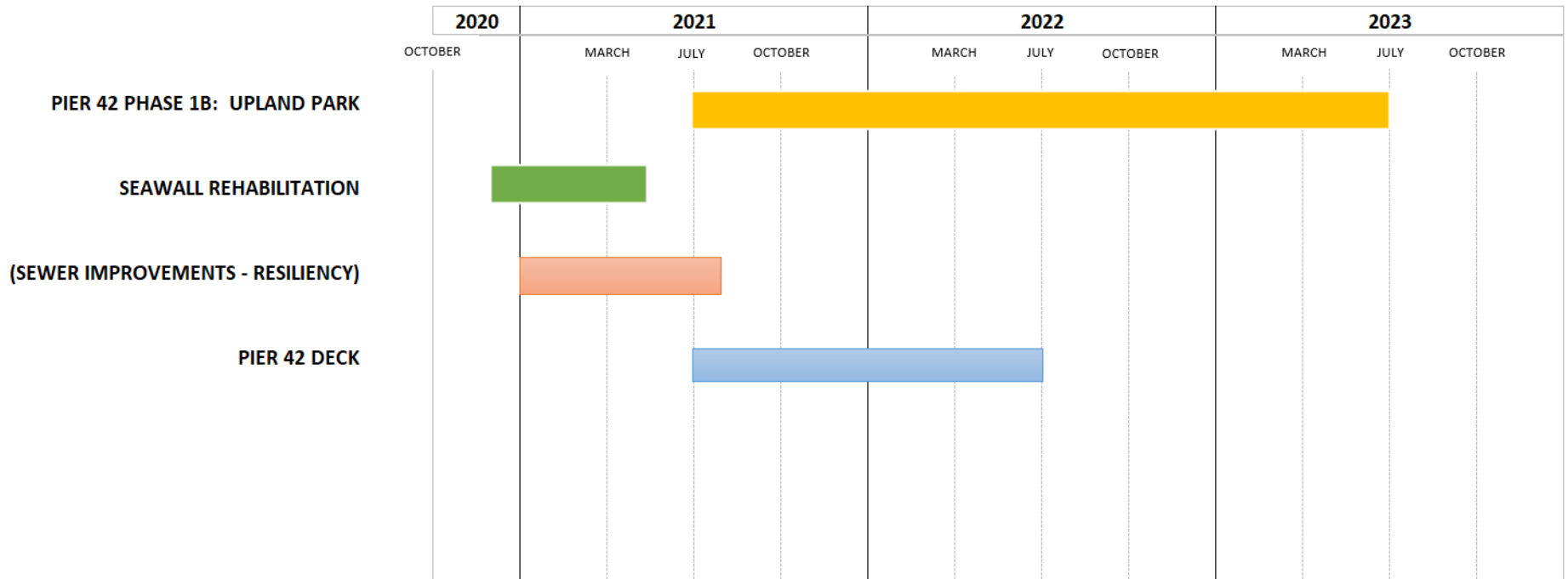


PHASE 1B  
(Upland Park)



PIER DECK  
IMPROVEMENTS

# PROJECT SCHEDULE



*\* Approximate Project Durations*



# CONSTRUCTION ACTIVITIES

- Traffic
  - Construction vehicles will primarily enter via Montgomery Street from FDR
  - Stabilized construction entry minimizes tracking of soil to local streets
  - FDR entry ramp work (related to sewer) approved by DOT
- Site Safety
  - Park footprint will be fenced off
- Noise and Light
  - Typical site noise levels not expected to exceed FDR noise
  - Worksite not expected to be lit at night, except for some sewer work which may require overnight closures/work on FDR ramps (community to be notified ahead)
- Air Quality
  - Trucks not permitted to idle onsite for long periods
  - Community Air Monitoring Plan (CAMP) in place, dust will be monitored during intrusive underground work

# COMMUNITY CONSTRUCTION LIAISON

- Pier 42 project anticipates sharing Community Construction Liaison (CCL) with ESCR Project Area 1
  - Consistency of information to community between projects
- Until CCL is identified, please contact Wil Fisher ([wfisher@edc.nyc](mailto:wfisher@edc.nyc)) with any questions
- NYCEDC website to be updated with Pier 42 webpage and archive of previous community presentation materials
- Periodic updates to Community Board 3 and other community representatives

# Q&A

Contact Wil Fisher with additional questions: [wfisher@edc.nyc](mailto:wfisher@edc.nyc)

