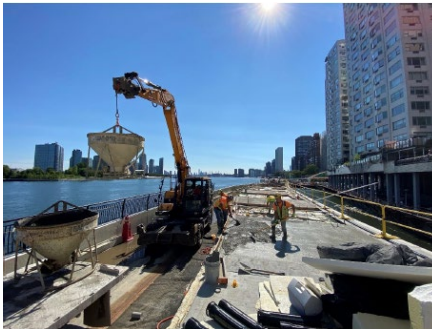




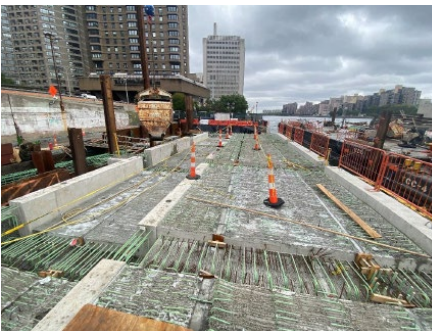
Modular pavement system installed underneath the bike path to encourage root growth by adjacent trees



Bike path concrete pour



AHG signage



AHG deck planks

## NEW PODCAST

Learn more about the project [here](#) !

# East Midtown Greenway and Andrew Haswell Green Park Phase 2B

## 53rd – 62nd Streets

The Manhattan Waterfront Greenway is intended to transform underutilized waterfront into public open space for both recreational and commuting use. The Greenway will connect over 1,000 acres of open space and provide access to the waterfront for Manhattan communities that have historically been cut off from it.

Despite progress in the development of new waterfront public open space in New York City, a major gap exists in Midtown East, which is cut off from the water by the FDR Drive. The East Midtown Waterfront Project addresses the gap between 38th and 61st Streets along the East River; the first segment now underway, called East Midtown Greenway, also includes the construction of Andrew Haswell Green Park Phase 2B.

A new 40-foot-wide esplanade will run over the water from 53rd to 60th Streets, parallel to the FDR Drive, allowing pedestrians to experience water on both sides. An ADA-accessible bridge will also be built from the Greenway over the FDR Drive to East 54th Street. Andrew Haswell Green Park Phase 2B is a 1.1-acre site between 60th and 62nd Streets and includes a new lawn, landscaping, and other park amenities.

### WORK TO DATE

- Modular pavement system installed underneath the bike path to encourage root growth by adjacent trees.
- Railings installed.
- Selective demolition of east and south curtain walls at the AHG building structure completed.
- AHG signage installed on the Roosevelt Island tramway structure. The signage unveiling ceremony was conducted on October 10, 2022.

### CONSTRUCTION HOURS

- After Hours Variances are in place for work due to tides from 4 am – 11 pm, M-F.
- Occasional work will take place on Saturdays and Sundays.

### NEXT STEPS

- EMG topside and AHG marine platform construction is ongoing.
- The pedestrian bridge railing fabrication and painting is ongoing. The installation of railing will require FDR closures.
- Planting south of 59th St has commenced and will continue through next month.

For more information, email [EastMidtownWaterfront@edc.nyc](mailto:EastMidtownWaterfront@edc.nyc) or visit [edc.nyc/project/east-midtown-waterfront](https://edc.nyc/project/east-midtown-waterfront).



NYC Parks

