

East Midtown Greenway and Andrew Haswell Green Park 2B 53rd – 62nd Street

Presentation to CB8 Parks & Waterfront Committee and 197-A Committee

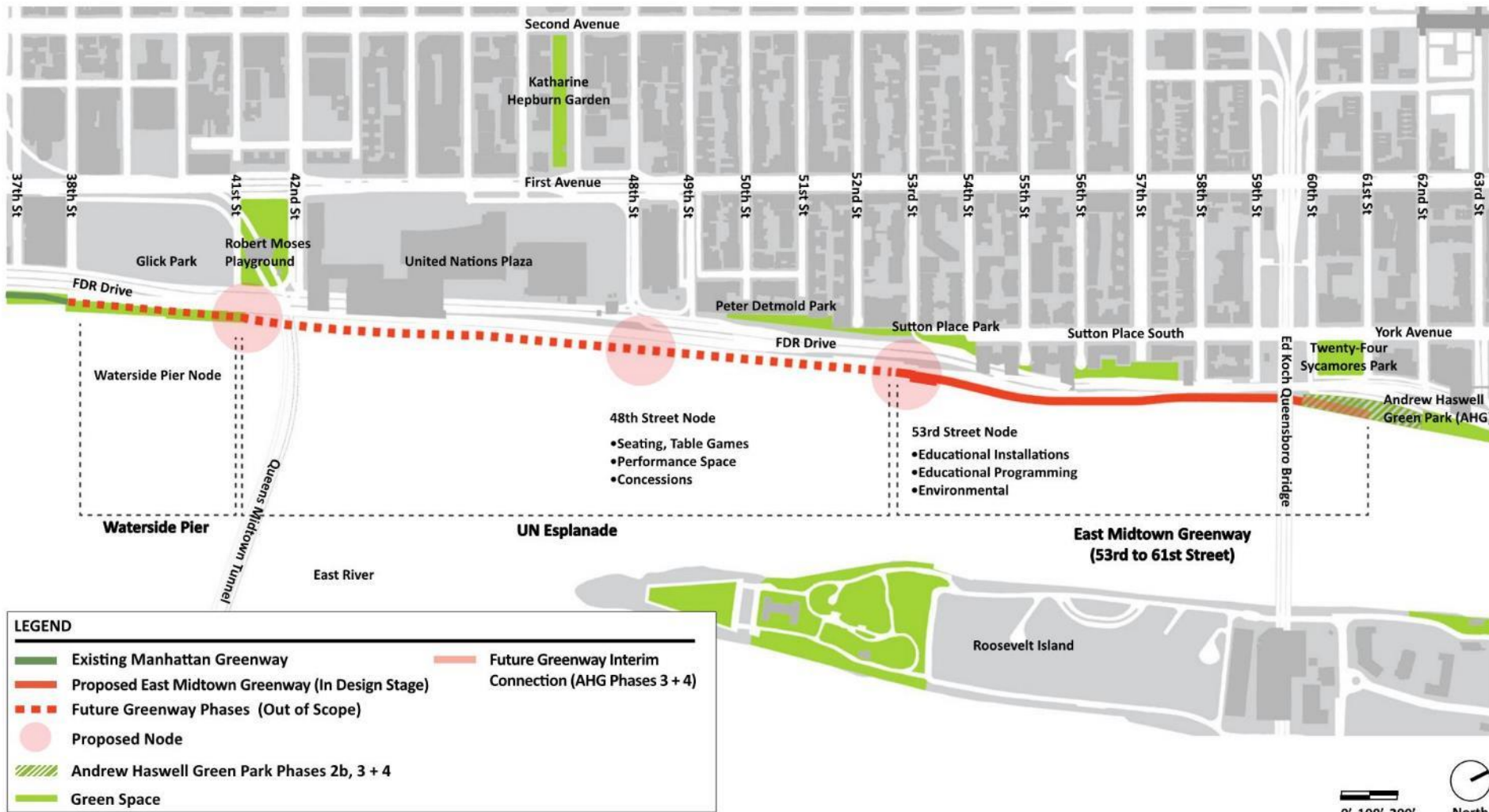
Oct 13th, 2022

NYC / EDC



NYC Parks

East Midtown Waterfront Esplanade



LEGEND

- Existing Manhattan Greenway
- Proposed East Midtown Greenway (In Design Stage)
- - - Future Greenway Phases (Out of Scope)
- Proposed Node
- ▨ Andrew Haswell Green Park Phases 2b, 3 + 4
- Green Space
- Future Greenway Interim Connection (AHG Phases 3 + 4)

EMG and Andrew Haswell Green Park 2B



EMG and Andrew Haswell Green Park 2B

Sutton Place Park

Birch Point

The South Dune/Pollinator Meadow

The Bluff

The Grove

The North Dune/Wetland Forest

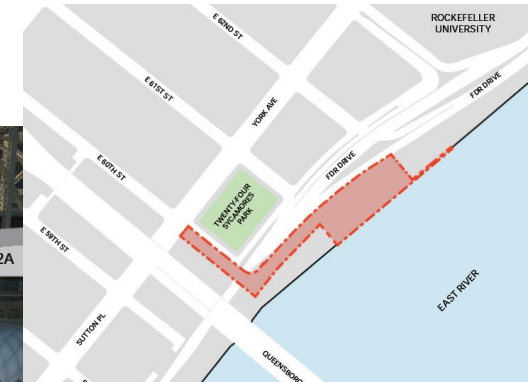
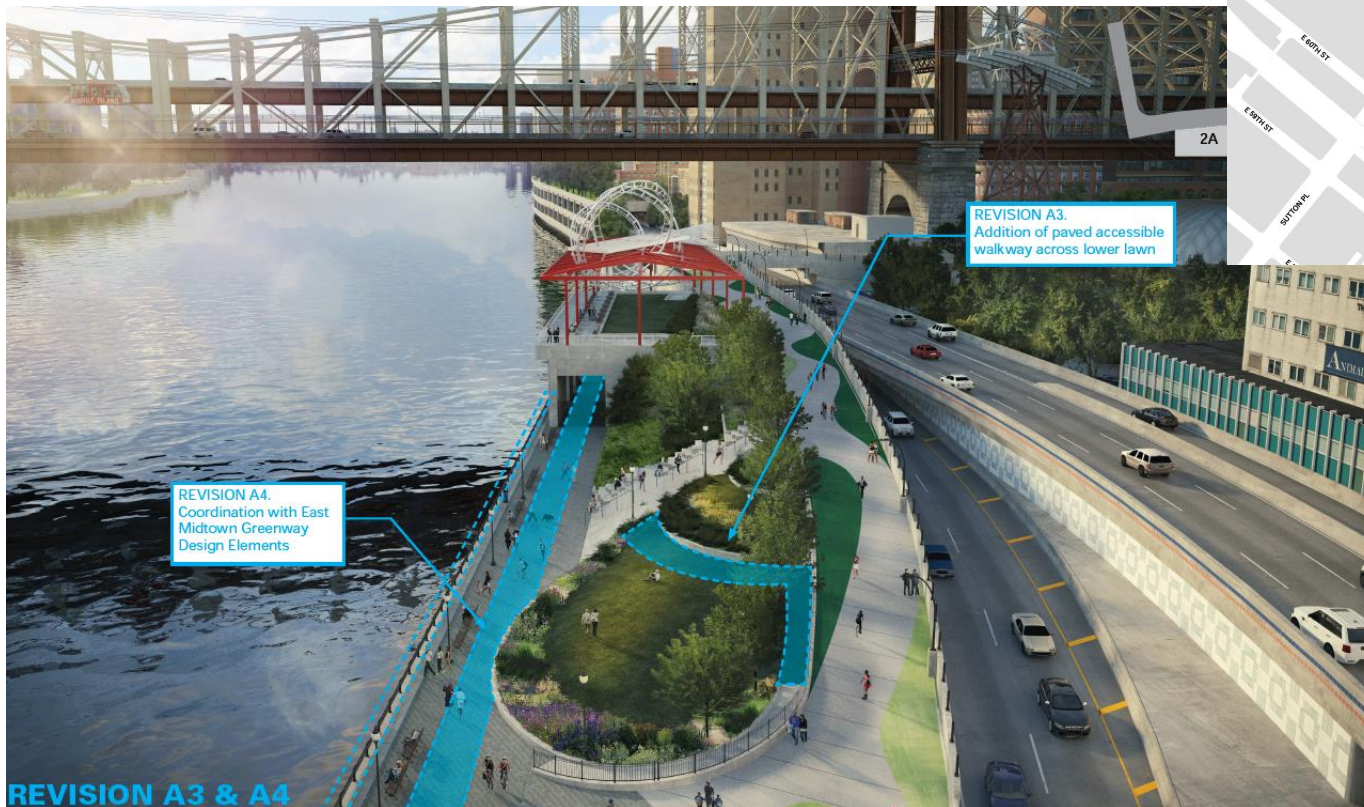
The Landing

AHG Phase 2B

Alice Aycock Pavilion (on top)



Andrew Haswell Green Park 2B



Approximately 1 acre new passive recreation park:

- Reconstruction of the existing platform
- Rehabilitation of the East 60th Street overpass
- Landscaping, railing, lighting, pavement and seating

Rendering of AHG2B looking South



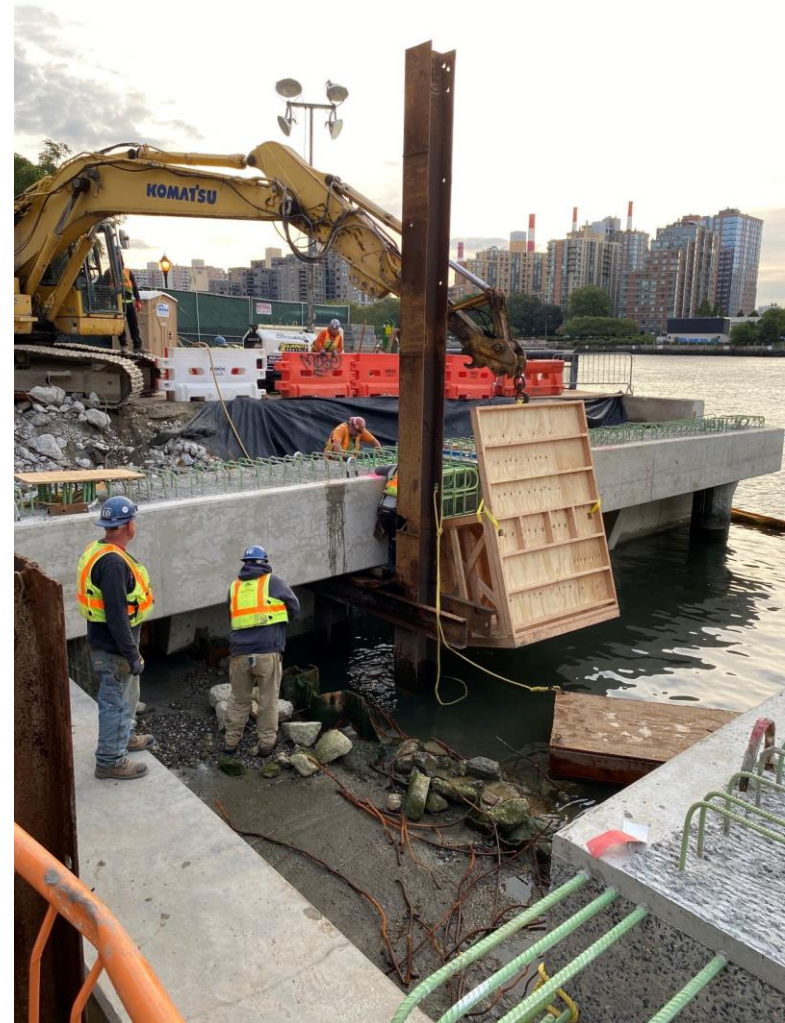
AHG Signage Unveiling – 10/07/2022



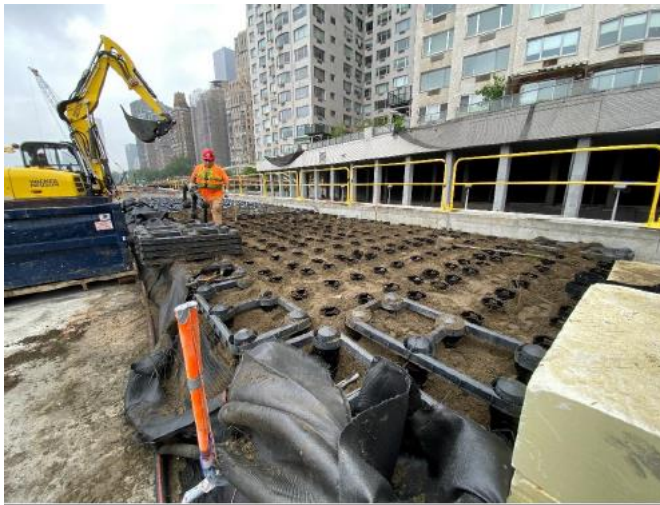
Construction Progress: AHG2B



Install Deck Planks



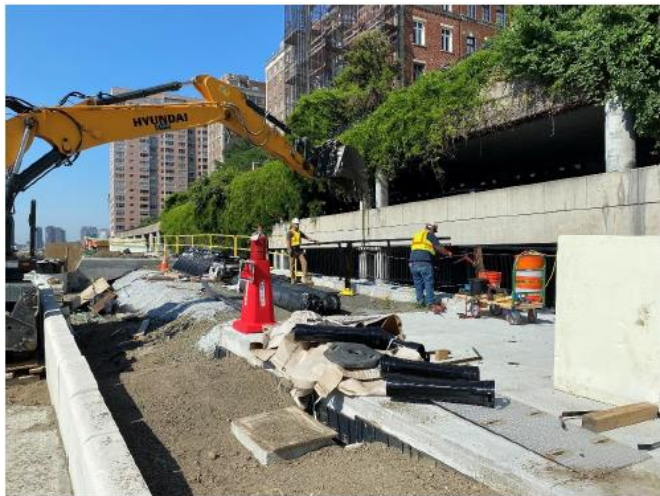
Construction Progress: East Midtown Greenway



Soil in Silva Cells



Bike Path Concrete Pour



Install West Side Railings



Strip Ramp Edge Forms

Construction Progress: Heliport Structure



East Curtain Wall Demo



Demo of South Curtain Wall

Rendering of Transition Area



Schedule



- EMG Area 1, 2 and 3: topside construction underway – Planting in Fall 2022
- 54th Pedestrian Bridge: Fence and Railing Fabrication
- 60th Street Ramp: critical repairs complete
- AHG2B: Platform construction ongoing
- AHG2B Civil Work: Fall 2022 – Fall 2023
- Greenway and AHG 2B completion: Dec 2023

Questions / Comments



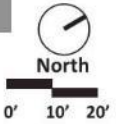
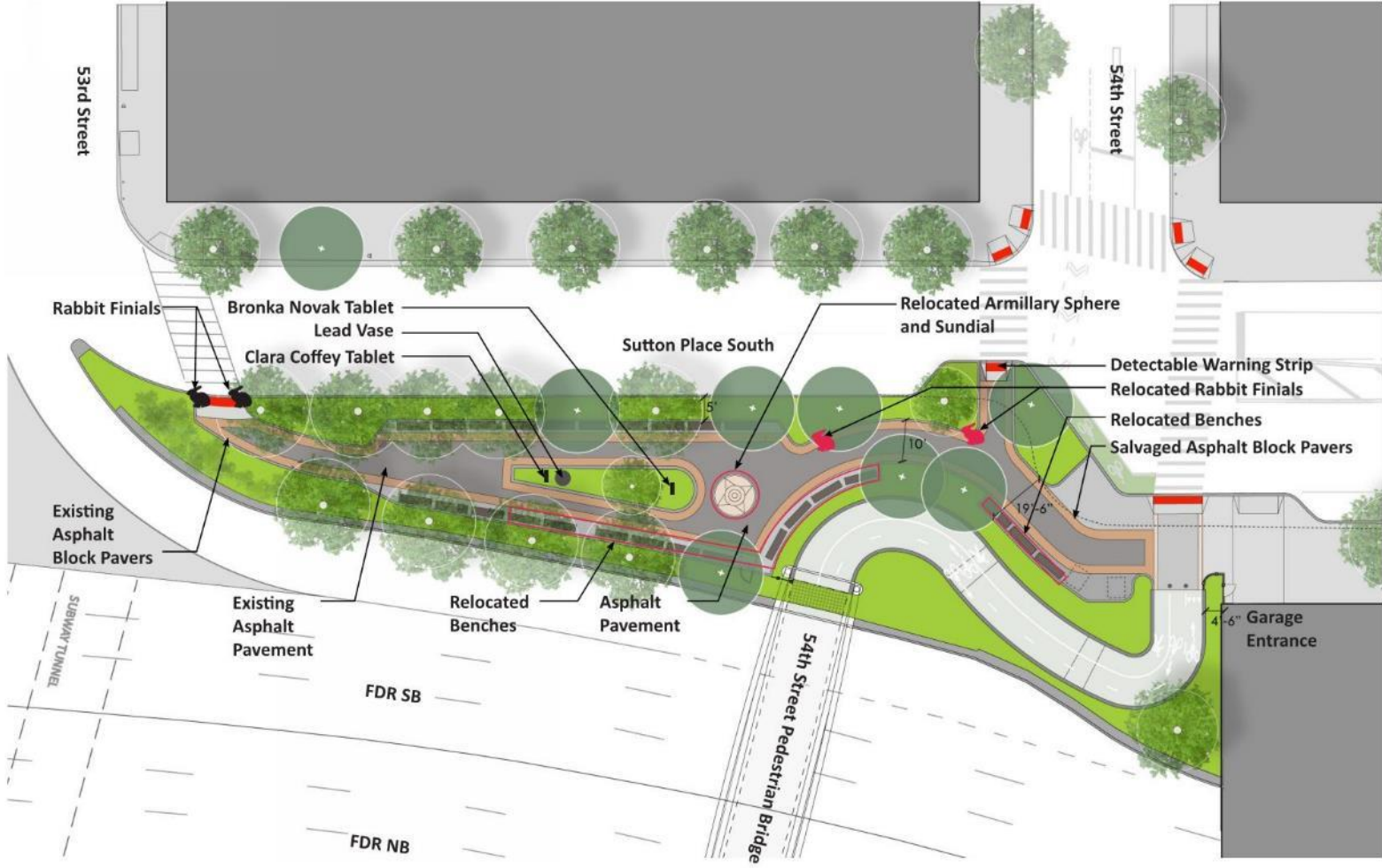
Appendix

NYC / EDC



NYC Parks

Clara Coffey Park



Clara Coffey Park



Rendering of 54th St. Pedestrian Bridge



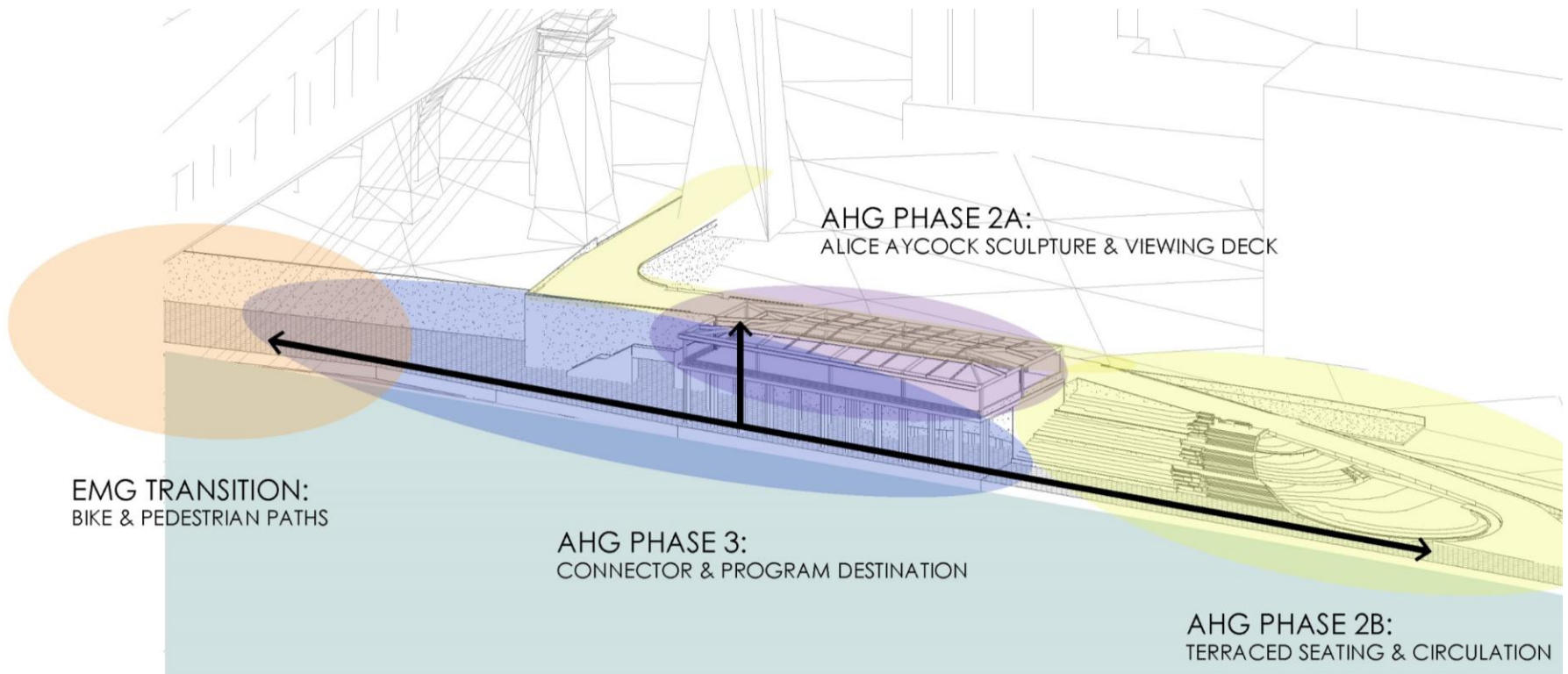
Rendering of esplanade



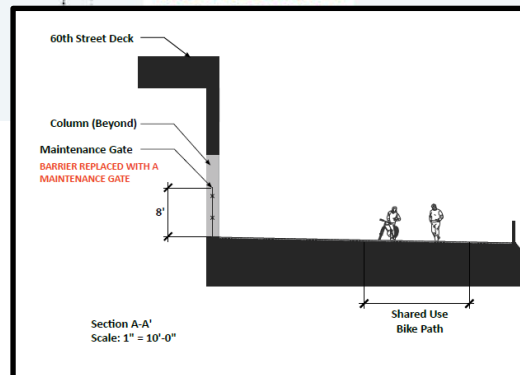
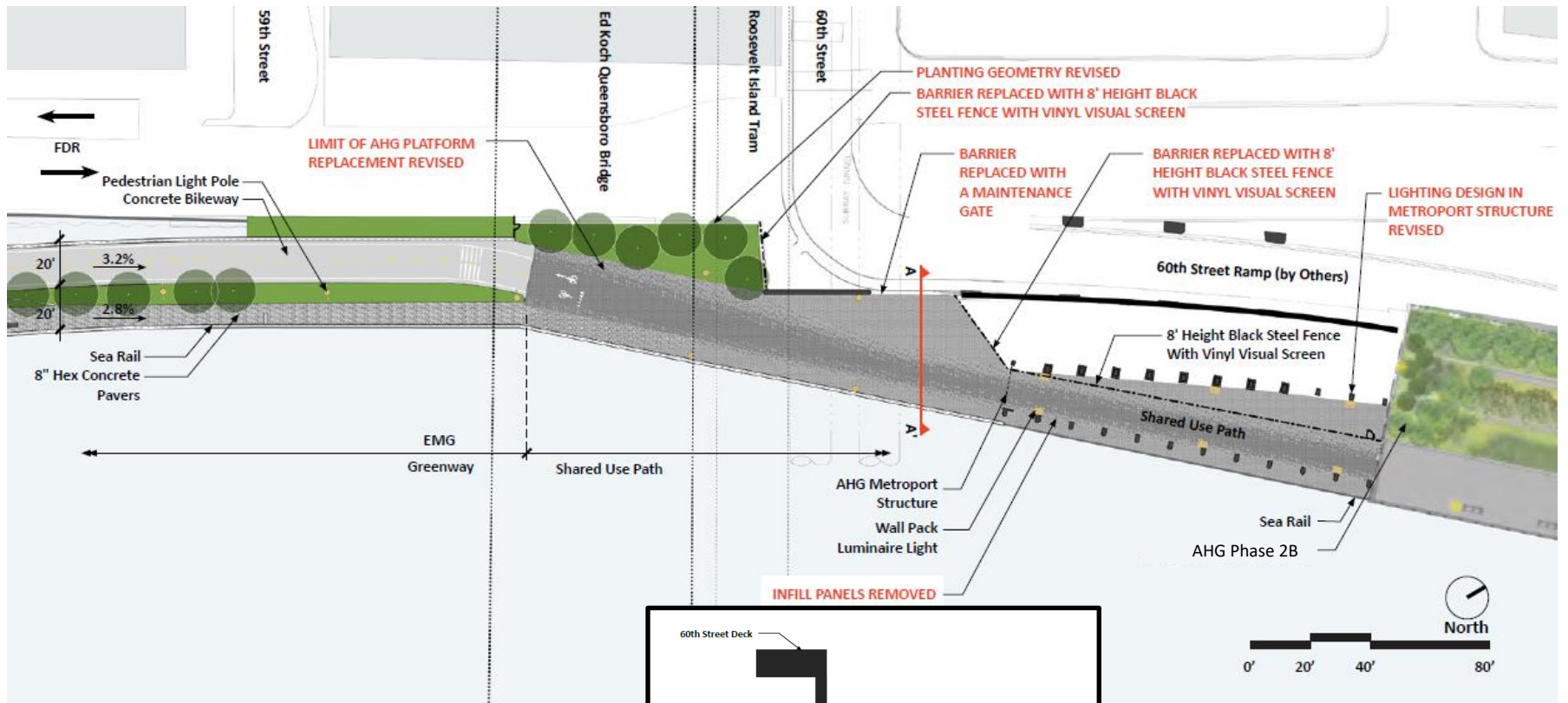
Andrew Haswell Green Park

3 Phases:

- AHG 2A – Construction Complete
- AHG 2B – In Construction
- AHG 3 – Unfunded



Transition Area Enlargement Plan



Existing Photos under Alice Ayccock Pavilion

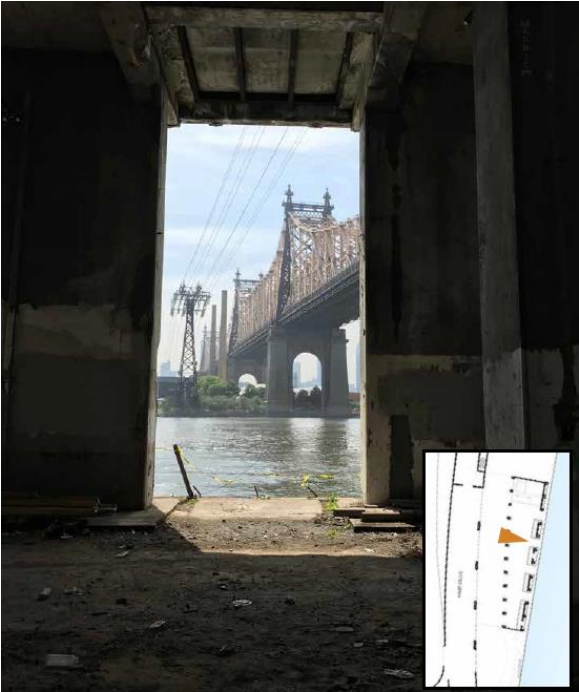


View looking North



View looking West to FDR

Existing Photos under Alice Ayccock Pavilion



View looking East

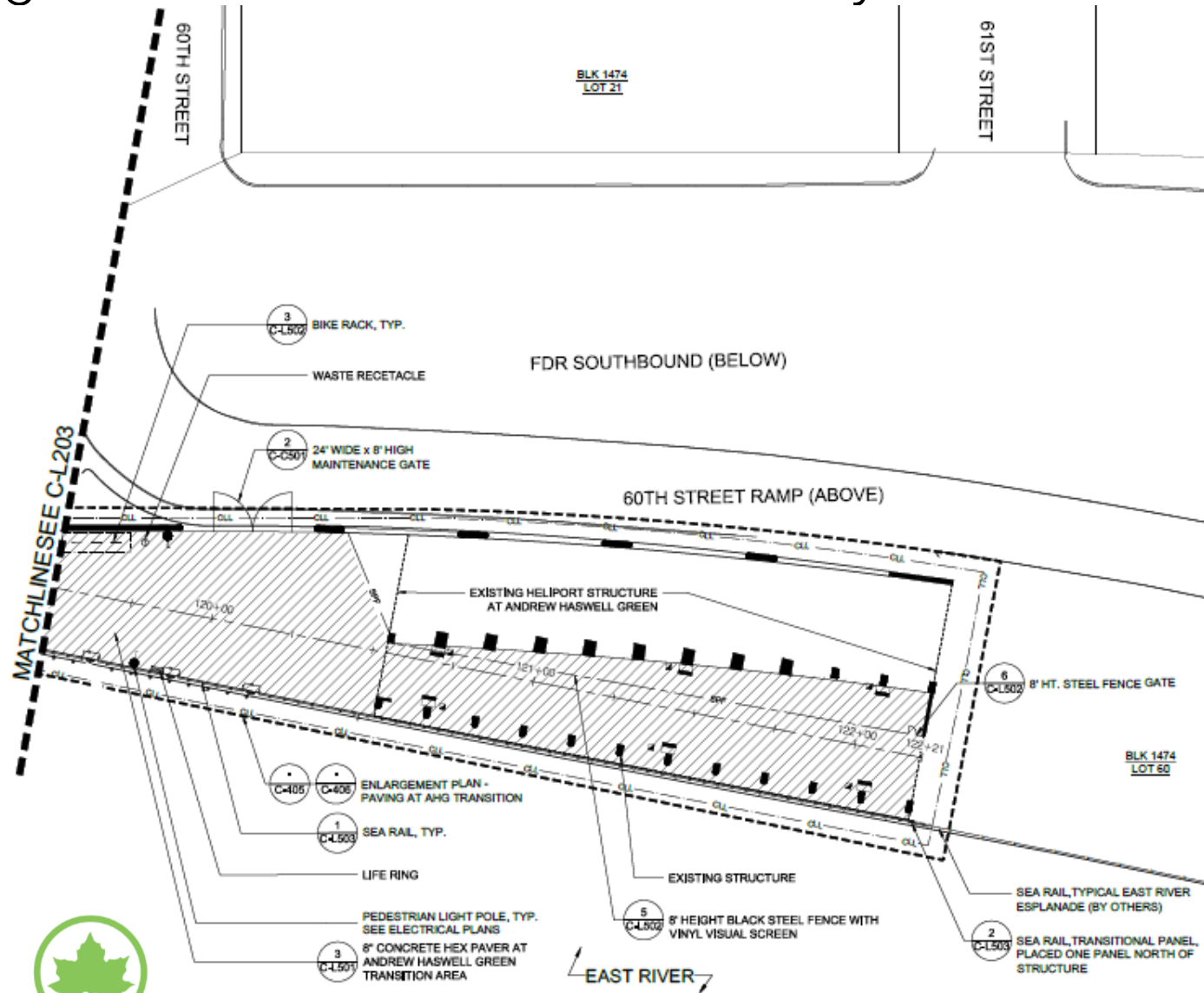


View looking East



View looking North,
along East River

Enlargement Plan under the Alice Ayccock Pavilion

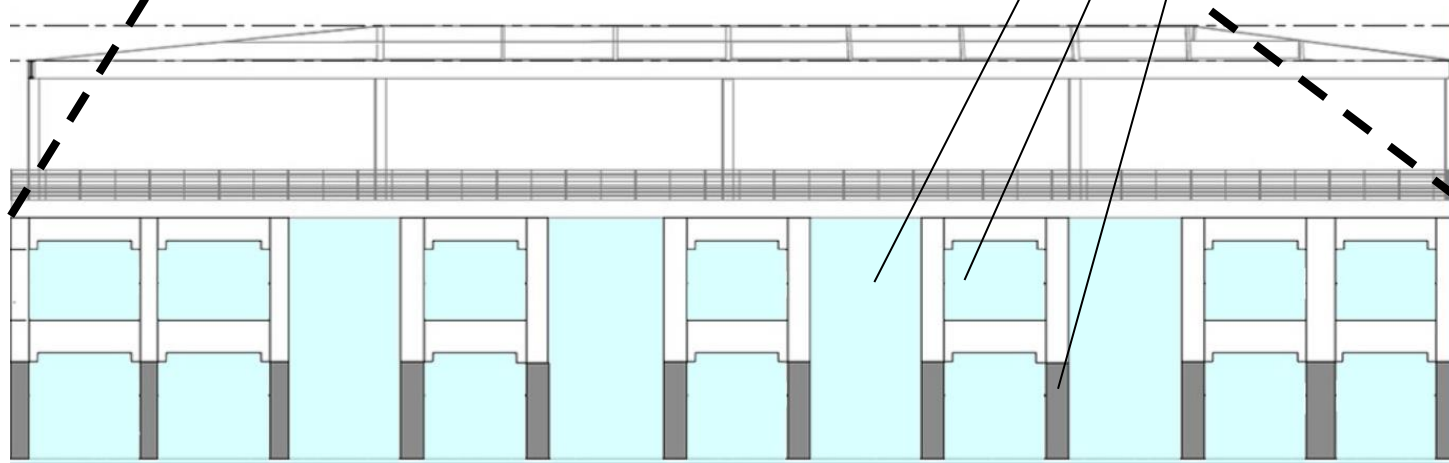


Alice Aycock Pavilion



Existing Photo

- Existing full-height openings
- New half-height openings
- New paint at lower half of structure



Proposed East Elevation

Area under Alice Aycock Pavilion

- Over 27' tall
- New openings on North and South walls are approx. 17' & 18' wide
- New openings on East wall are 13' wide
- 8' tall black steel fencing separates esplanade from interim Parks maintenance area
- 6 new wall-mounted lights
- Shared use path is 17' wide

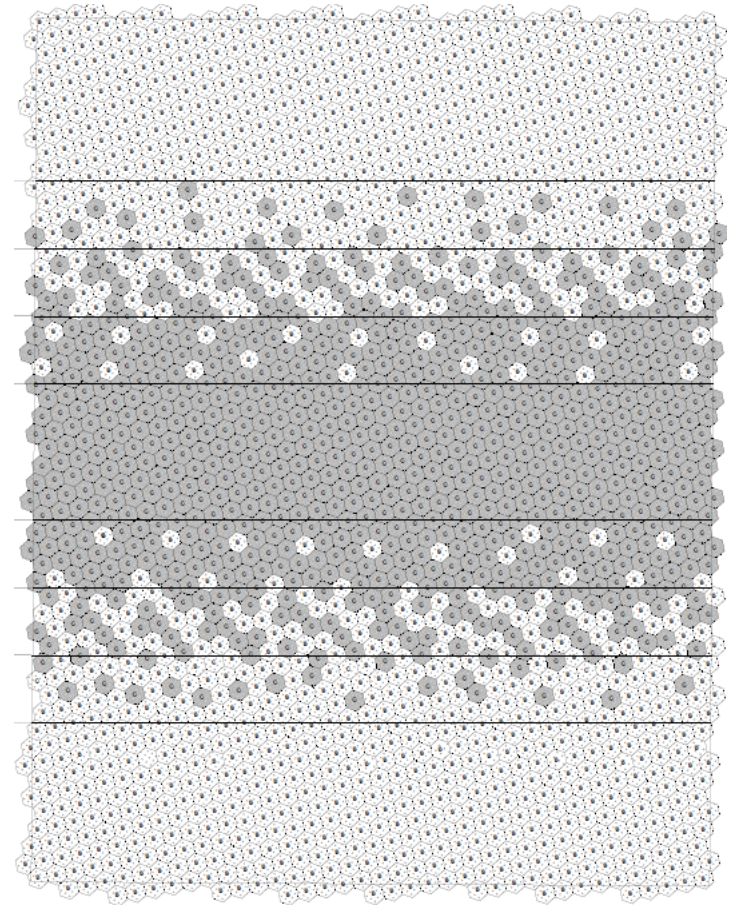


Diagram of paving at shared use path

Transition Area: Materials and Fixtures



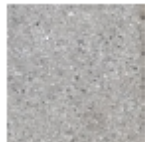
8" Hexagon Concrete Pavers
Color: Medium Gray, Dark Gray



8' Height Black Steel Fence with Vinyl Visual Screen
Material: Steel
Color: Black



Valet LED Tunnel Luminaire
Finish: TGIC Polyester Powder Coat Paint



Tectura Designs, 8" Hexagon Concrete Pavers, UF-35



Tectura Designs, 8" Hexagon Concrete Pavers, UF-60



Sidewalk Gray
2133-60

Paint for Columns

Typical in-water construction equipment



Barge mounted drill rig

